

United States Department of the Interior
National Park Service

NATIONAL REGISTER OF HISTORIC PLACES
REGISTRATION FORM

1. Name of Property

historic name: Cabin #6

other name/site number: CN0060

2. Location

street & number: Petit Jean State Park Campground Access Road

not for publication: N/A

city/town: Winrock

vicinity: X

state: AR county: Conway code: AR 029 zip code: 72025

3. Classification

Ownership of Property: Public-state

Category of Property: Building

Number of Resources within Property:

Contributing	Noncontributing	
<u>1</u>	<u> </u>	buildings
<u> </u>	<u> </u>	sites
<u> </u>	<u> </u>	structures
<u> </u>	<u> </u>	objects
<u>1</u>	<u>0</u>	Total

Number of contributing resources previously listed in the National Register: N/A

Name of related multiple property listing: Facilities Constructed by the Civilian Conservation Corps in Arkansas, 1933-1942

4. State/Federal Agency Certification

As the designated authority under the National Historic Preservation Act of 1986, as amended, I hereby certify that this X nomination request for determination of eligibility meets the documentation

standards for registering properties in the National Register of Historic Places and meets the procedural and professional requirements set forth in 36 CFR Part 60. In my opinion, the property X meets ___ does not meet the National Register Criteria. ___ See continuation sheet.

Cathryn A. Byrd _____
Signature of certifying official Date 4-6-92

Arkansas Historic Preservation Program
State or Federal agency and bureau

In my opinion, the property ___ meets ___ does not meet the National Register criteria. ___ See continuation sheet.

Signature of commenting or other official Date

State or Federal agency and bureau

=====

5. National Park Service Certification

=====

I, hereby certify that this property is:

- ___ entered in the National Register _____
___ See continuation sheet.
- ___ determined eligible for the National Register _____
___ See continuation sheet.
- ___ determined not eligible for the National Register _____
- ___ removed from the National Register _____
- ___ other (explain): _____

Signature of Keeper Date of Action

=====

6. Function or Use

=====

Historic: RECREATION AND CULTURE Sub: Outdoor recreation

Current : RECREATION AND CULTURE Sub: Outdoor recreation

=====

7. Description

=====

Architectural Classification:

N/A

Other Description: Rustic Resort

Materials: foundation Stone roof Asphalt
walls Stone other Wood log supports

Describe present and historic physical appearance. X See continuation sheet.

=====

8. Statement of Significance

=====

Certifying official has considered the significance of this property in relation to other properties: Locally.

Applicable National Register Criteria: A, C

Criteria Considerations (Exceptions): N/A

Areas of Significance: SOCIAL HISTORY
ARCHITECTURE
ENTERTAINMENT/RECREATION

Period(s) of Significance: 1935-1942

Significant Dates: N/A

Significant Person(s): N/A

Cultural Affiliation: N/A

Architect/Builder: Civilian Conservation Corps

State significance of property, and justify criteria, criteria considerations, and areas and periods of significance noted above.

X See continuation sheet.

=====

9. Major Bibliographical References

=====

X See continuation sheet.

Previous documentation on file (NPS):

- preliminary determination of individual listing (36 CFR 67) has been requested.
- previously listed in the National Register
- previously determined eligible by the National Register
- designated a National Historic Landmark
- recorded by Historic American Buildings Survey # _____
- recorded by Historic American Engineering Record # _____

Primary Location of Additional Data:

- State historic preservation office
- Other state agency
- Federal agency
- Local government
- University
- Other -- Specify Repository: _____

=====

10. Geographical Data

=====

Acreage of Property: Less than one

UTM References: Zone Easting Northing Zone Easting Northing

A 15 505690 3885990

___ See continuation sheet.

Verbal Boundary Description: ___ See continuation sheet.

Beginning at a point on the eastern edge of the Petit Jean State Park campground access road formed by the intersection of said edge with a perpendicular line running parallel with Cabin #6's northern elevation and located approximately 50 feet to the north thereof, proceed easterly along said line for a distance of 150 feet, to its intersection with a perpendicular line running parallel with Cabin #6's eastern elevation; thence proceed southerly along said line for a distance of 150 feet to its intersection with a perpendicular line running parallel with Cabin #6's southern elevation; thence proceed westerly along said line for a distance of 150 feet to its intersection with a perpendicular line running along the eastern edge of the Petit Jean State Park campground access road; thence proceed northerly along said line for a distance of 150 feet to the point of beginning.

Boundary Justification: ___ See continuation sheet.

This boundary includes both the historic structure and a representative amount of the surrounding property historically-associated with the

recreational activities for which this structure was constructed.

=====

11. Form Prepared By

=====

Name/Title: Kenneth Story, Architectural Historian

Organization: Arkansas Historic Preservation Program Date: March 3, 1992

Street & Number: 225 E. Markham, Suite 300 Telephone: (501) 324-9346

City or Town: Little Rock State: AR ZIP: 72201

United States Department of the Interior
National Park Service

National Register of Historic Places Continuation Sheet

Section number 7 Page 1

Cabin #6 c. 1935

Cabin #6 is a one-story, rectangular building of cut-stone masonry construction with a continuous foundation of field stone. Like the other cabins, it is of the Rustic Resort style. The gable roof is covered with composition shingle, as are the two porches. The porch on the northeastern facade has a gable roof, stone floor, stone balustrades, and covers about half of the facade. A set of stone stairs leads up to this porch. The second porch, on the southwestern side of the cabin, has a shed roof with wood supports on stone piers. This one-bay porch faces the canyon and was the building's primary elevation. Several of the windows are double-hung with a 2-over-2 pane arrangement; the others are single-pane, sliding windows. An exterior field-stone chimney is located on the northern end of the cabin.

United States Department of the Interior
National Park Service

**National Register of Historic Places
Continuation Sheet**

Section number 8 Page 1

The land that would comprise Petit Jean State Park was donated to the State of Arkansas in the mid-1920's by individual landowners and sympathetic lumbering concerns as the first step in the formation of a state parks system. The top of Petit Jean Mountain had already been recognized for its scenic splendor, and for its geological wealth and diversity, and so seemed a particularly worthy site. The initial plan of these citizens was to turn the entire site over to the federal government for the establishment of a national park; however, after considerable study, National Park Service officials determined that Petit Jean Mountain was not a unique natural resource when evaluated on a national basis, and thus declined to assume ownership. Yet these same officials strongly encouraged the state to preserve and maintain the site as an important representation of Arkansas's natural heritage, and in 1923, the Arkansas Legislature passed Act 276 authorizing the Commissioner of State Lands to accept land donations for state parks and reservations. Thus began the Arkansas State Parks system, with Petit Jean State Park as its flagship.

Cabin #6 was constructed c. 1935 at Petit Jean State Park by the men of the 1781st Company of the Civilian Conservation Corps, Arkansas District, stationed at Morrilton, Arkansas as a temporary residential building to be used by the park's visitors for overnight accommodations. This facility was constructed by the CCC as part of the overall plan to develop this part of the mountain as a public park to be administered by the state of Arkansas.

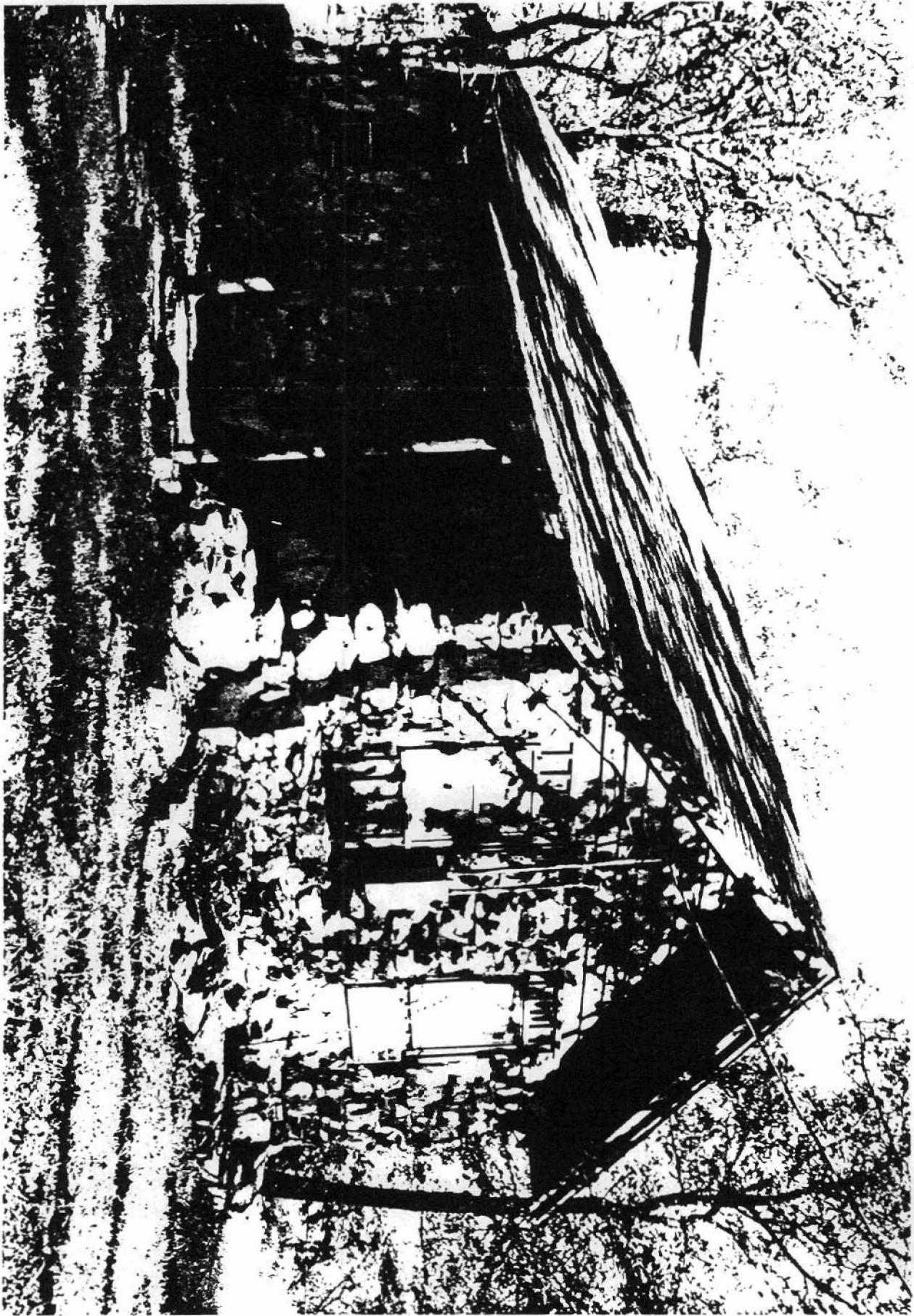
This building was erected at Petit Jean State Park by the men of the Civilian Conservation Corps for the purpose of overnight accommodations for park visitors, and was intended to serve those visitors by providing comfortable, modern facilities to enhance the quality of their stay. Thus Cabin #6 is eligible under Criterion A for its associations with both the Civilian Conservation Corps' importance within Arkansas social history and its role in the development of outdoor parks dedicated to public leisure and recreational activities. It is also eligible under Criterion C due to its status as a representative and intact example of the Rustic style of architecture that was made popular nationwide by the CCC, and which has since become virtually identified with it.

United States Department of the Interior
National Park Service

National Register of Historic Places
Continuation Sheet

Section number 9 Page 1

See "Recreational Facilities Constructed by the Civilian Conservation Corps in Arkansas, 1933-1942," Section H.



Case 10
The value of
the variable, the
phenomenon of
Oscar's trip
A KATIE ON THE
A NEW FROM VISA

1
1515
V. D.

