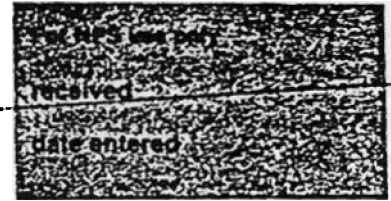


United States Department of the Interior
National Park Service

National Register of Historic Places
Inventory—Nomination Form



Continuation sheet 36

Item number 1, 2, 4, 6, & 10

Page 1

INDIVIDUAL DATA SHEET

General Description

Code: CN-010

Congressional District: Second

Name: First National Bank of Morrilton Current Owner: J. J. Magie, M. D.

Address: Main at Moose Streets
Morrilton, Arkansas

Address: 1504 Caldwell
Conway, Arkansas 72032

County: Conway

Architectural Information

Architectural Firm: Charles Thompson

Date of Construction: ca. 1925

Stylistic Influence: Classical Revival &
Craftsman

Original Use: Bank

Present Use: Vacant

Geographical Information

UTM Reference: 15 523340/3889810

Acreage: Less than one

Verbal Boundary Description: Original Town of Morrilton
Block 3, East part lot 6

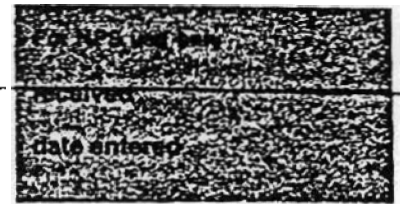
Condition

Excellent
 Good
 Fair

Deteriorated
 Ruins
 Unexposed

Unaltered
 Altered

National Register of Historic Places
Inventory—Nomination Form



Continuation sheet

37

Item number 7 & 8

Page 2

Code: CN-010

(Main at Moose Streets, Morrilton, AR)

Physical Description

Dominating the Main Street commercial district of this small town is this tall, narrow five-story bank building located on a corner of a principal intersection, Moose and Main Street. The simple rectangular, vertical massing of the flat-roofed building extends an entire half block on the side elevation (Moose Street) and features a narrow three-bay facade on the front (Main Street) elevation. The upper four stories of the structure are comparatively unornamented, characterized by dark red brick facing, sash plate glass windows in groups of three and simple tile insets in geometric Craftsman-influenced motifs. A simple brick cornice projects just beneath the plain parapet which delineates the roofline. A clear differentiation is made between the upper and lower sections of the building through the use of cut stone facing and classical detailing on the entire first floor. Framing the lower story at the front elevation are two large stone pilasters with stylized Corinthian capitals set on high plinths. The entablature is delineated by a frieze inscribed with "First National Bank." Above this, multiple moldings in dentil and egg and dart motifs make the transition to the projecting stone cornice. The double leaf door has a simple molded surround and is crowned by a decorative stone panel carved with cartouche with flanking garlands, above which appears a simple cornice. This entrance is framed by two stone Tuscan columns placed on granite plinths which support a

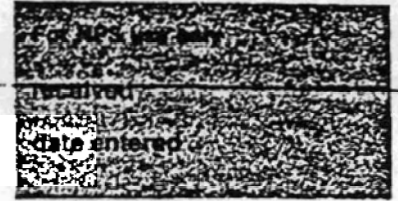
(Continued)

Statement of Significance

Charles L. Thompson's 1925 design for the First National Bank of Morrilton is an unusual blend of Classical Revival and Craftsman styles. The building is the dominant structure in the small town's streetscape. The only five-story building in downtown Morrilton, the First National Bank is a simple rectangular building featuring vertical massing. Two sets of drawings in the collection indicate at one time the building was intended to be only one story. A second set of drawings shows a design for the five-story building. The first floor of the Morrilton First National Bank Building features a formality of design in classical detailing. Two large stone pilasters with stylized Corinthian capitals mark the elaborate first floor embellishment. The double leaf entry door is framed by two stone Tuscan columns which support a segmental arch opening. The upper four stories of the building are characterized by Craftsman-influenced motifs. One of the most picturesque buildings in the city of Morrilton, the First National Bank represents one of the more unusual commercial structure designs by Charles L. Thompson.

United States Department of the Interior
National Park Service

**National Register of Historic Places
Inventory—Nomination Form**



Continuation sheet 38

Item number 7

Page 3

Code: CN-010

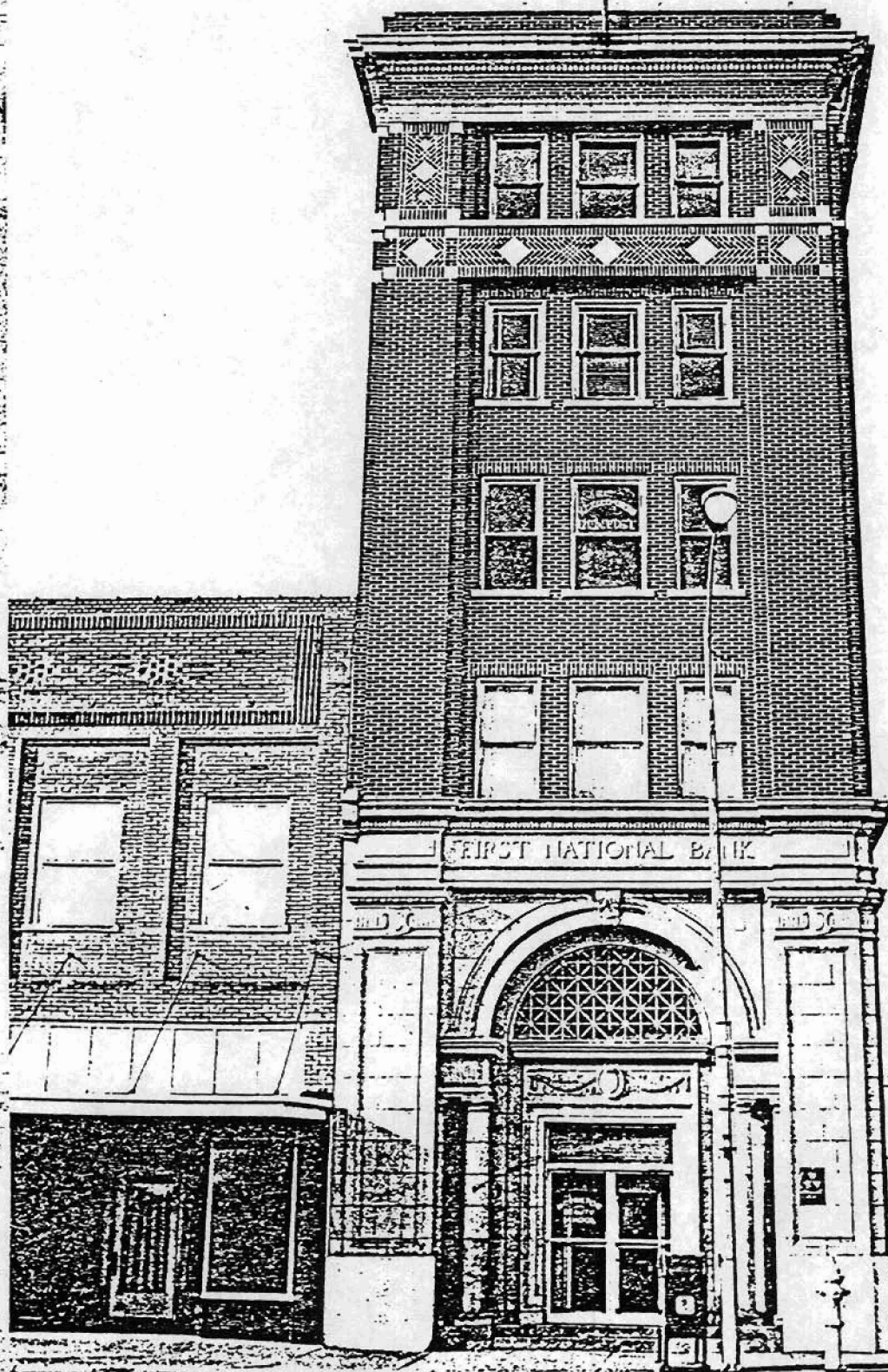
(Main at Moose Streets, Morrilton, AR)

Physical Description

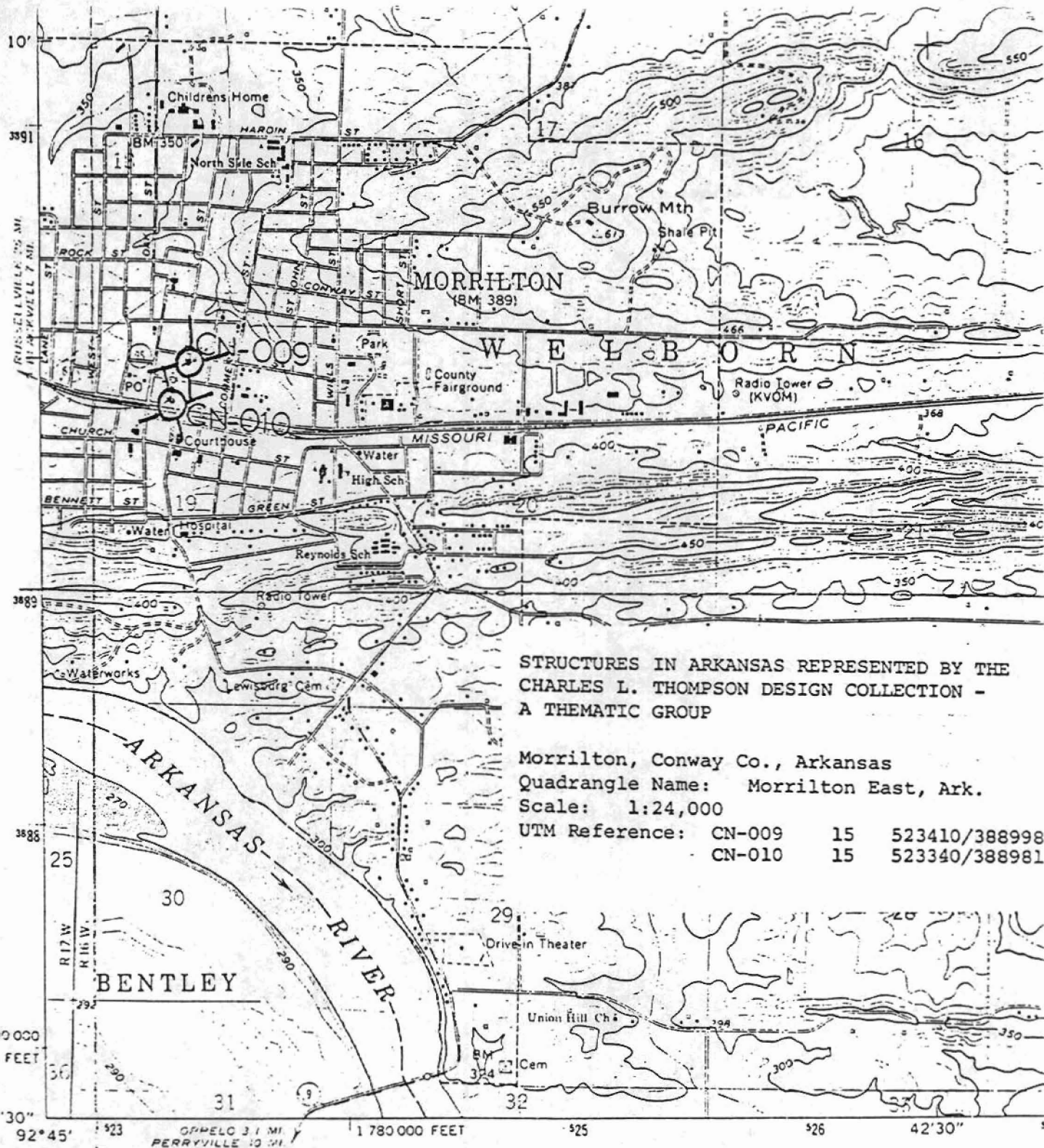
(Continued)

segmental arch opening decorated with a large scroll as a keystone. A metal grille in a neo-classical spoke motif covers the plate glass infill of this arch. A range of tall plate glass windows articulates the lower story of the side elevation.

Statement of Significance



FIRST NATIONAL BANK



STRUCTURES IN ARKANSAS REPRESENTED BY THE
 CHARLES L. THOMPSON DESIGN COLLECTION -
 A THEMATIC GROUP

Morrilton, Conway Co., Arkansas
 Quadrangle Name: Morrilton East, Ark.
 Scale: 1:24,000

UTM Reference:	CN-009	15	523410/388998
	CN-010	15	523340/388981

(PERRYVILLE)
 7450 III SE

Mapped, edited, and published by the Geological Survey
 Control by USGS, USC&GS, and USCE
 Topography by photogrammetric methods from aerial
 photographs taken 1958 Field checked 1961
 Polyconic projection 1927 North American datum
 10,000-foot grid based on Arkansas coordinate system, north zone
 1000-meter Universal Transverse Mercator grid ticks,
 zone 15, shown in blue

0" 11' 3 MILS
 124 MILS

UTM GRID AND 1981 MAGNETIC NORTH
 DECLINATION AT CENTER OF SHEET

Red tint indicates area in which only landmark buildings are shown
 Fine red dashed lines indicate selected fence and field lines where
 generally visible on aerial photographs. This information is unchecked

FOR SALE
 AND