

NR listed 4/9/90  
CL0742

United States Department of the Interior  
National Park Service

# National Register of Historic Places Registration Form

This form is for use in nominating or requesting determinations of eligibility for individual properties or districts. See instructions in *Guidelines for Completing National Register Forms* (National Register Bulletin 16). Complete each item by marking "x" in the appropriate box or by entering the requested information. If an item does not apply to the property being documented, enter "N/A" for "not applicable." For functions, styles, materials, and areas of significance, enter only the categories and subcategories listed in the instructions. For additional space use continuation sheets (Form 10-900a). Type all entries.

### 1. Name of Property

historic name Little Missouri River Bridge

other names/site number HAER No. AR-44

### 2. Location

street & number Clark County Road # 179, sp

city, town Prescott

vicinity

state Arkansas

code 05

county Clark

code 019

zip code 71857

### 3. Classification

Ownership of Property

- private
- public-local
- public-State
- public-Federal

Category of Property

- building(s)
- district
- site
- structure
- object

Number of Resources within Property

Contributing	Noncontributing
_____	_____ buildings
_____	_____ sites
<u>1</u>	_____ structures
_____	_____ objects
<u>1</u>	_____ Total

Name of related multiple property listing:

Historic Bridges of Arkansas

Number of contributing resources previously listed in the National Register N/A

### 4. State/Federal Agency Certification

As the designated authority under the National Historic Preservation Act of 1966, as amended, I hereby certify that this  nomination  request for determination of eligibility meets the documentation standards for registering properties in the National Register of Historic Places and meets the procedural and professional requirements set forth in 36 CFR Part 60. In my opinion, the property  meets  does not meet the National Register criteria.  See continuation sheet.

Signature of certifying official

Date

Arkansas Historic Preservation Program

State or Federal agency and bureau

In my opinion, the property  meets  does not meet the National Register criteria.  See continuation sheet.

Signature of commenting or other official

Date

State or Federal agency and bureau

### 5. National Park Service Certification

I, hereby, certify that this property is:

entered in the National Register.

See continuation sheet.

determined eligible for the National Register.  See continuation sheet.

determined not eligible for the National Register.

removed from the National Register.

other, (explain:) \_\_\_\_\_

Signature of the Keeper

Date of Action

**6. Function or Use**

Historic Functions (enter categories from instructions)

Transportation/Road-Related  
\_\_\_\_\_  
\_\_\_\_\_

Current Functions (enter categories from instructions)

Transportation/Road-Related  
\_\_\_\_\_  
\_\_\_\_\_

**7. Description**

Architectural Classification  
(enter categories from instructions)

Other: Camelback Pratt through-truss  
\_\_\_\_\_  
\_\_\_\_\_

Materials (enter categories from instructions)

foundation steel/concrete  
walls steel  
\_\_\_\_\_  
roof \_\_\_\_\_  
other \_\_\_\_\_  
\_\_\_\_\_

Describe present and historic physical appearance.

United States Department of the Interior  
National Park Service

**National Register of Historic Places  
Continuation Sheet**

Section number 7 Page 1

---

The Little Missouri River Bridge is comprised of a Camelback Pratt through-truss main span, 185-feet in length; a Pratt through-truss secondary span, 110-feet in length; and two steel, I-beam approach spans, one on either end of the bridge, for a total length of 315 feet.

The through-truss steel spans are pin-connected. The top chord and the majority of the verticals are built-up members made from channels, continuous plates, batten plates or lacing bars riveted together. The bottom chord and some diagonals are rectangular bar. The majority of the diagonals and both top and bottom laterals are round rod and the portal bracing is made from angles. Floor-girders and stringers are steel I-beams. The piers are cylindrical-steel rings riveted together and filled with concrete. Both steel trusses have handrails made from angles. The roadway is covered with timber planking.

The ~~Weyman~~ Bridge is currently maintained by Clark County as a vehicular bridge and is in good condition.



**United States Department of the Interior**  
**National Park Service**

# **National Register of Historic Places**

## **Continuation Sheet**

**Section number** 8 **Page** 1

---

Designed and constructed by an unknown builder during the Early Transportation Era: 1803-1922, the Little Missouri River Bridge is an excellent Arkansas example of a Camelback Pratt through-truss. The bridge is located on the old Natchitoches Trace, an early 18th century Indian-French-Spanish trail that crossed the river at this location. Believed to be built around 1910, the Little Missouri River Bridge is the only documented primary span Camelback Pratt through-truss bridge surviving in Arkansas. As such, it is being nominated under Criteria A and C with statewide significance.





LITTLE MISSOURI RIVER BRIDGE

PRESCOTT, ARKANSAS

PHOTOGRAPHER, MICHAEL SUANDA

JULY, 1988

NEGATIVE ON FILE AT THE AHPP

VIEW LOOKING SOUTHWEST





LITTLE MISSOURI RIVER BRIDGE

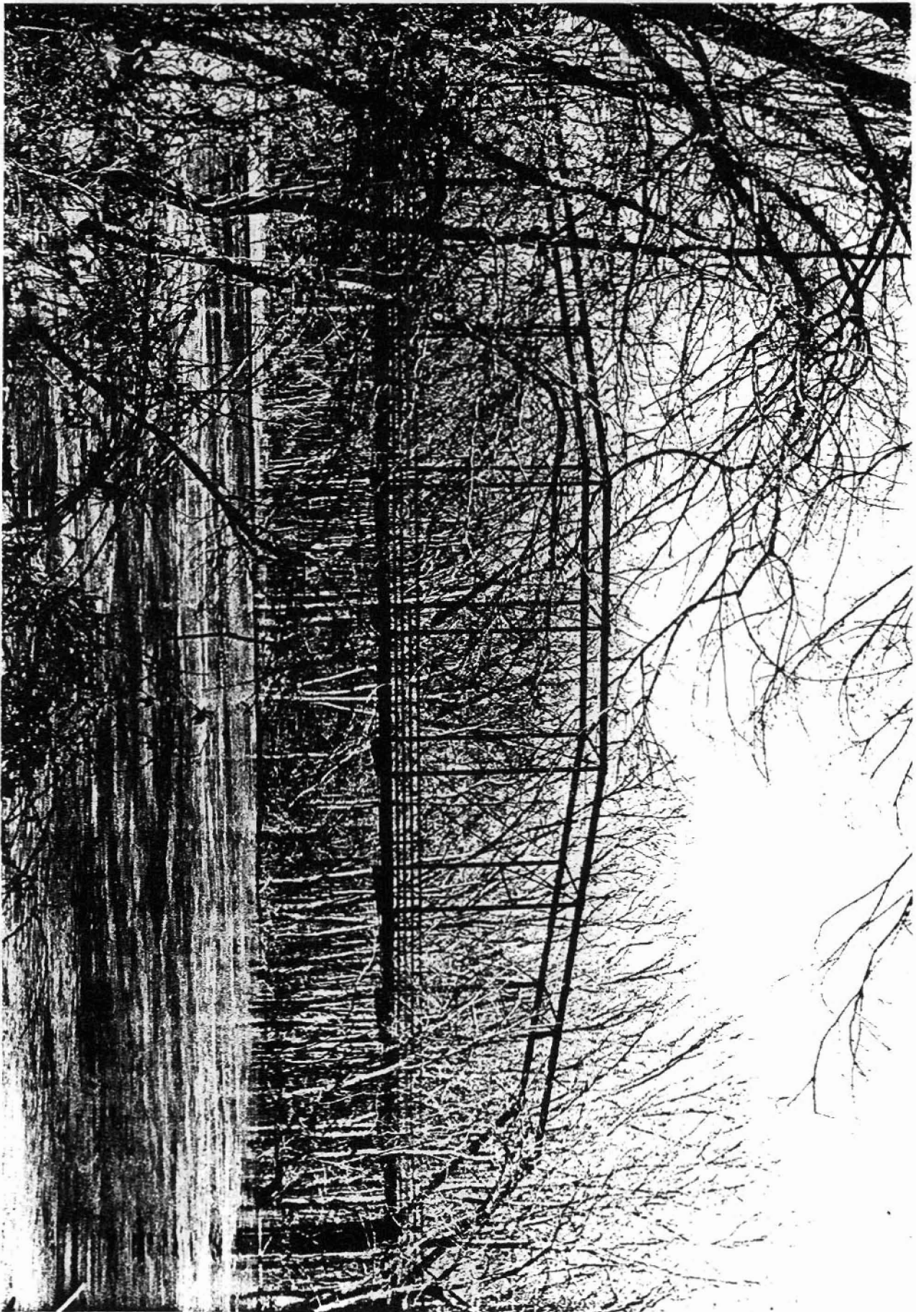
PRESCOTT, MISSOURI

PHOTOGRAPHER, MICHAEL SWANICK

JULY, 1988

NEGATIVE ON FILE AT AHPP

DETAIL VIEW OF GUARDRAIL, SOUTH END OF WEST TRUSS,  
LOOKING WEST.



LITTLE MISSOURI RIVER BRIDGE

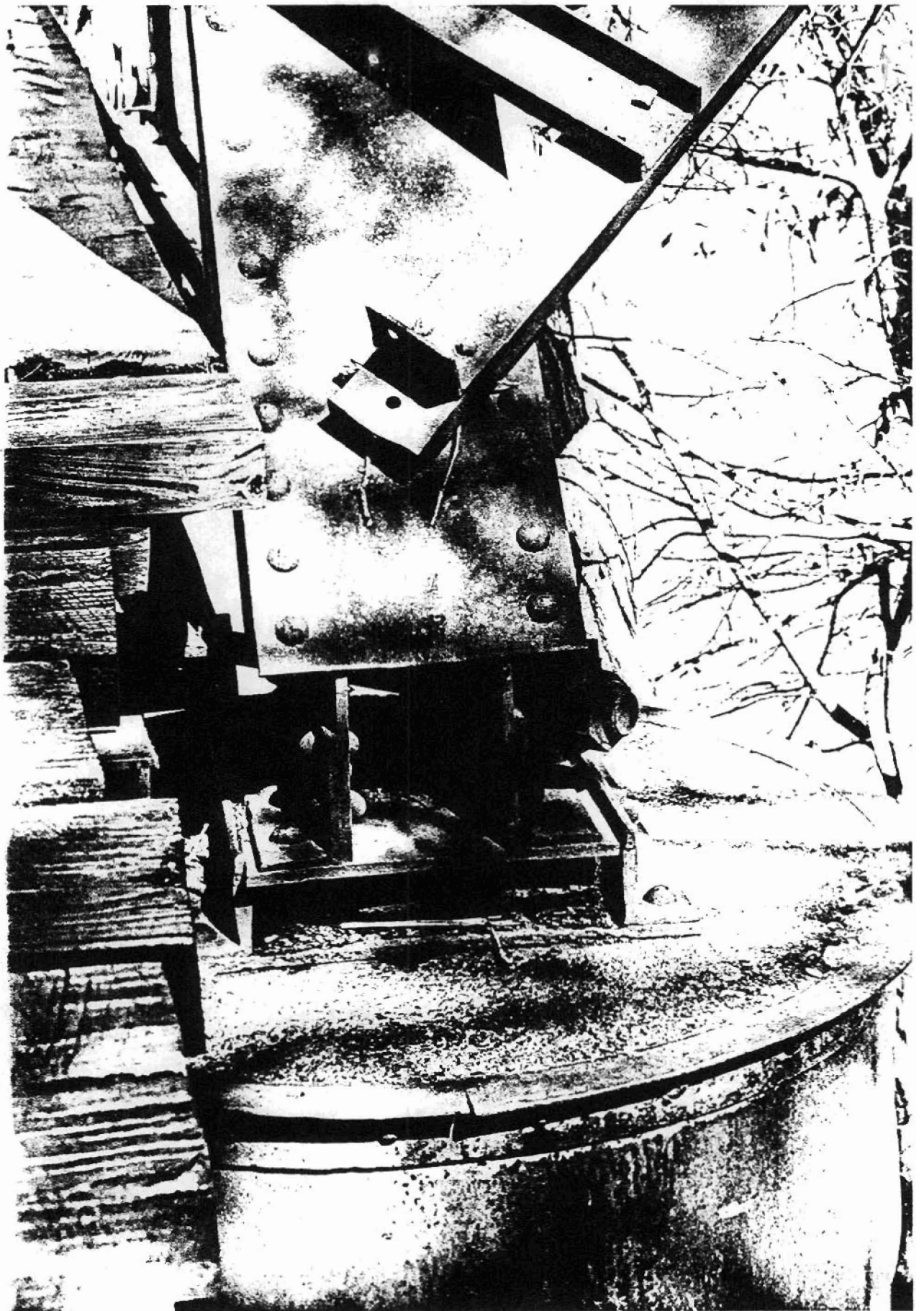
PRELLETT, ARKANSAS

PHOTOGRAPHER, MICHAEL SWANSON

JULY, 1988

NEGATIVE ON FILM AT AHPP

VIEW LOOKING NORTHWEST, MAIN SPAN



LITTLE MISSOURI RIVER BRIDGE

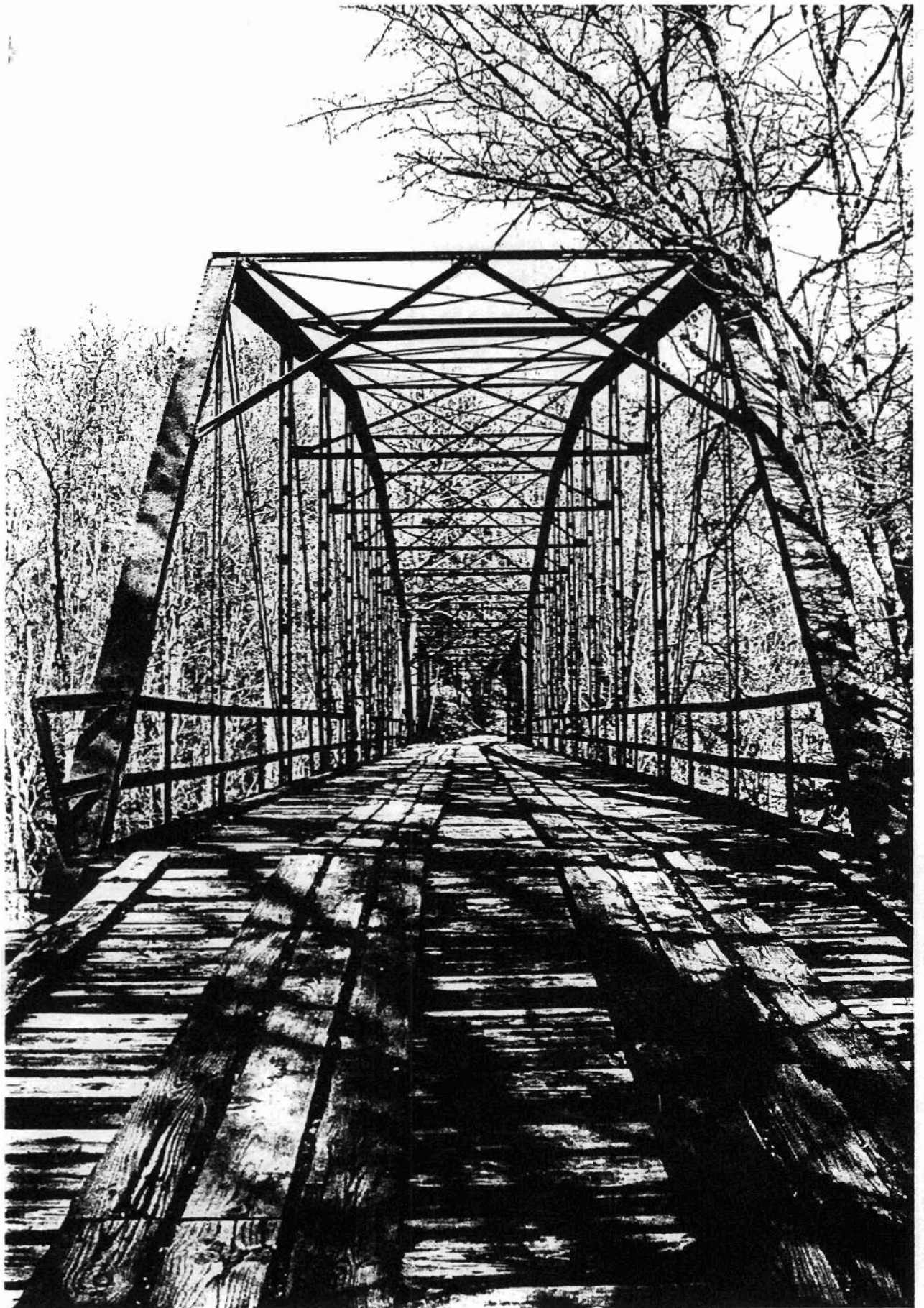
PRESCOTT, MISSOURI

PHOTOGRAPHER, MICHAEL SWANSON

JULY, 1988

NEGATIVE ON FILE AT THE ALPP

DETAIL VIEW OF SOUTHEAST PIER, TOP CHAIN CONNECTION, OF MAIN  
SPAN



LITTLE MISSOURI RIVER BRIDGE

PRESCOTT, ARIZONA

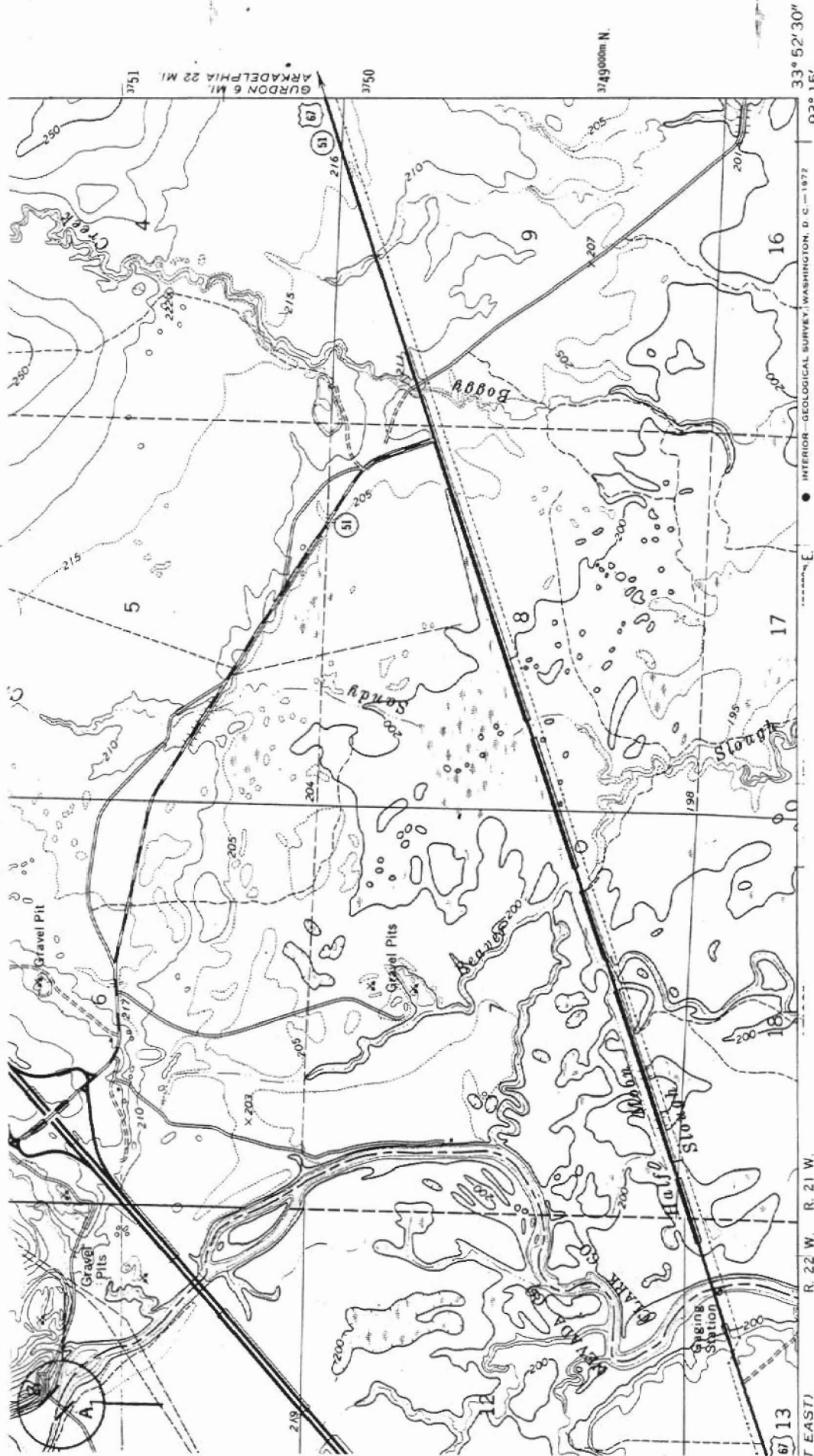
PHOTOGRAPHER, MICHAEL SCHEIDT

JULY, 1988

NEGATIVE ON FILE AT THE ANRP

VIEW LOOKING NORTHEAST

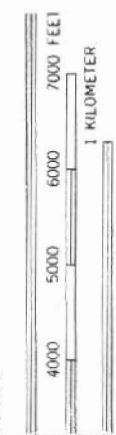




**ROAD CLASSIFICATION**

Primary highway, all weather, Light-duty road, all weather,  
 improved surface  
 Secondary highway, all weather, Unimproved road, fair or dry  
 weather  
 Interstate Route U. S. Route State Route

**Little Missouri River Bridge**  
**Prescott Vic., Arkansas**  
**Clark County**  
 A) 15/471360/3751240  
 B) 15/471420/3751300  
**Okolona South Quadrangle**  
**1:24,000**



HORIZONTAL SCALE  
 1:24,000  
 VERTICAL SCALE  
 1:5-FOOT CONTOURS  
 SEA LEVEL

ALL MAP ACCURACY STANDARDS  
 COLORADO 80225, OR WASHINGTON,  
 MISSION, LITTLE ROCK, ARKANSAS 72201  
 AND SYMBOLS IS AVAILABLE ON REQUEST

**OKOLONA SOUTH, ARK.**  
 N3352.5-W9315/7.5

1970

AMS 7351 IV NE-SERIES V684

(WHELEN SPRINGS)  
 7351 I SW

33° 52' 30"  
 93° 15'

3749000m N

GURDON 6 MI.  
 ARKADLPHIA 22 MI.



**8. Statement of Significance**

Certifying official has considered the significance of this property in relation to other properties:

nationally  statewide  locally

Applicable National Register Criteria  A  B  C  D

Criteria Considerations (Exceptions)  A  B  C  D  E  F  G

Areas of Significance (enter categories from instructions)

Transportation

Engineering

\_\_\_\_\_

\_\_\_\_\_

\_\_\_\_\_

\_\_\_\_\_

\_\_\_\_\_

\_\_\_\_\_

Period of Significance

1910-1922

\_\_\_\_\_

\_\_\_\_\_

Cultural Affiliation

N/A

\_\_\_\_\_

\_\_\_\_\_

Significant Dates

1910

\_\_\_\_\_

\_\_\_\_\_

Significant Person

N/A

Architect/Builder

N/A

\_\_\_\_\_

\_\_\_\_\_

State significance of property, and justify criteria, criteria considerations, and areas and periods of significance noted above.

See continuation sheet

**9. Major Bibliographical References**

See Historic Bridges of Arkansas, Multiple Property Nomination, Section H.

**Previous documentation on file (NPS):**

- preliminary determination of individual listing (36 CFR 67) has been requested
- previously listed in the National Register
- previously determined eligible by the National Register
- designated a National Historic Landmark
- recorded by Historic American Buildings Survey # \_\_\_\_\_
- recorded by Historic American Engineering Record # HAER No. AR-44

See continuation sheet

**Primary location of additional data:**

- State historic preservation office
- Other State agency
- Federal agency
- Local government
- University
- Other

**Specify repository:**

U.S. Library of Congress

**10. Geographical Data**

Acreage of property Less than one acre

**UTM References**

A 15 4711360 3751240  
Zone Easting Northing

B 15 4711420 3751300  
Zone Easting Northing

C         

D         

See continuation sheet

**Verbal Boundary Description**

Beginning at a point approximately 4,100 feet west from the intersection of State Highway 51 and Clark County Road #179, the boundary of the Little Missouri River Bridge starts here at the east abutment, then continues west across the Little Missouri River for approximately 315 feet, where it terminates at the west abutment.

See continuation sheet

**Boundary Justification**

The boundary includes the main span, secondary span, approach spans, piers and abutments that are historically associated with this property.

See continuation sheet

**11. Form Prepared By**

name/title Michael Swanda, Survey Coordinator  
 organization Arkansas Historic Preservation Program date February 5, 1990  
 street & number 225 East Markham Street telephone (501) 371-2763  
 city or town Little Rock state Arkansas zip code 72201