

United States Department of the Interior
National Park Service

NATIONAL REGISTER OF HISTORIC PLACES
REGISTRATION FORM

1. Name of Property

historic name: Quitman Home Economics Building

other name/site number: CE0061

2. Location

street & number: 2nd Avenue

not for publication: N/A

city/town: Quitman

vicinity: N/A

state: AR

county: Cleburne

code: AR 023

zip code: 72131

3. Classification

Ownership of Property: Public-local

Category of Property: Building

Number of Resources within Property:

Contributing	Noncontributing	
<u>1</u>	<u> </u>	buildings
<u> </u>	<u> </u>	sites
<u> </u>	<u> </u>	structures
<u> </u>	<u> </u>	objects
<u>1</u>	<u>0</u>	Total

Number of contributing resources previously listed in the National Register: N/A

Name of related multiple property listing: Public Schools in the Arkansas Ozarks, 1920-1940

=====
4. State/Federal Agency Certification
=====

As the designated authority under the National Historic Preservation Act of 1986, as amended, I hereby certify that this X nomination _____ request for determination of eligibility meets the documentation standards for registering properties in the National Register of Historic Places and meets the procedural and professional requirements set forth in 36 CFR Part 60. In my opinion, the property X meets _____ does not meet the National Register Criteria. _____ See continuation sheet.

Cathryn A. Byrd _____ 7-14-92
Signature of certifying official Date

Arkansas Historic Preservation Program
State or Federal agency and bureau

In my opinion, the property _____ meets _____ does not meet the National Register criteria. _____ See continuation sheet.

Signature of commenting or other official Date

State or Federal agency and bureau

=====
5. National Park Service Certification
=====

I, hereby certify that this property is:

____ entered in the National Register _____
____ See continuation sheet. _____
____ determined eligible for the _____
National Register _____
____ See continuation sheet. _____
____ determined not eligible for the _____
National Register _____
____ removed from the National Register _____
____ other (explain): _____

Signature of Keeper Date
of Action

=====
6. Function or Use
=====

Historic: EDUCATION Sub: School

Current: EDUCATION Sub: School

=====

7. Description

=====

Architectural Classification:

LATE 19TH AND EARLY 20TH CENTURY AMERICAN MOVEMENTS
Craftsman

Other Description: Plain Traditional

Materials: foundation Stone roof Asphalt
walls Stone other N/A

Describe present and historic physical appearance. X See continuation sheet.

8. Statement of Significance

=====

Certifying official has considered the significance of this property in relation to other properties: Locally.

Applicable National Register Criteria: A

Criteria Considerations (Exceptions): N/A

Areas of Significance: EDUCATION
SOCIAL HISTORY

Period(s) of Significance: 1938-1940

Significant Dates: N/A

Significant Person(s): N/A

Cultural Affiliation: N/A

Architect/Builder: National Youth Administration

State significance of property, and justify criteria, criteria considerations, and areas and periods of significance noted above.
X See continuation sheet.

=====

9. Major Bibliographical References

=====

See "Public Schools in the Arkansas Ozarks, 1920-1940" Multiple Property Form, Section H.

___ See continuation sheet.

Previous documentation on file (NPS):

- preliminary determination of individual listing (36 CFR 67) has been requested.
- previously listed in the National Register
- previously determined eligible by the National Register
- designated a National Historic Landmark
- recorded by Historic American Buildings Survey # _____
- recorded by Historic American Engineering Record # _____

Primary Location of Additional Data:

- State historic preservation office
- Other state agency
- Federal agency
- Local government
- University
- Other -- Specify Repository: _____

=====

10. Geographical Data

=====

Acreege of Property: Less than one

UTM References: Zone Easting Northing Zone Easting Northing

A	<u>15</u>	<u>570730</u>	<u>3915240</u>	B	___	___	___
C	___	___	___	D	___	___	___

___ See continuation sheet.

Verbal Boundary Description: ___ See continuation sheet.

Beginning at a point formed by the intersection of a line running along the western edge of 2nd Avenue with a perpendicular line running parallel with the building's southern elevation and located 50 feet to the south thereof, proceed westerly along said line for a distance of approximately 200 feet to its intersection with a perpendicular line running parallel to the building's western elevation; thence proceed northerly along said line for a distance of approximately 200 feet to its intersection with a line running parallel to the building's northern elevation; thence proceed easterly along said line for a distance of approximately 200 feet to its intersection with a perpendicular line running along the western edge of 2nd Avenue; thence proceed southerly along said line for a distance of approximately 200 feet to the point of beginning.

Boundary Justification: ___ See continuation sheet.

___ This boundary includes both the historic resource and all the surrounding property known to have been historically associated therewith that retains its integrity.

=====
11. Form Prepared By
=====

Name/Title: Kenneth Story, National Register Coordinator

Organization: Arkansas Historic Preservation Program Date: July 14, 1992

Street & Number: 225 E. Markham, Suite 300 Telephone: (501) 324-9346

City or Town: Little Rock State: AR ZIP: 72201

United States Department of the Interior
National Park Service

National Register of Historic Places Continuation Sheet

Section number 7 Page 1

Summary

The Quitman Home Economics Building is a Plain Traditional single-story, rectangular-plan building constructed in 1938 by the National Youth Administration. A composition-shingle gable roof with Craftsman exposed rafters shields the structural cut-stone walls and foundation. There are two interior brick chimneys and an exterior cut-stone chimney at the southern elevation.

Elaboration

The front or western elevation is dominated by projecting gable roof porch at the southern end. The porch is composed of a raised concrete deck on a cut-stone foundation and two cut-stone columns which form a segmental arch on the three sides of the porch. The columns are quoined with buff brick. The arches and the large, louvered attic vent are trimmed with buff brick in the same manner as the column quoins. Four concrete steps are located at the front of the porch while a modern handicapped-access ramp has been constructed running parallel to the north. The entrance is quoined with buff brick and features a single-leaf door, of which the upper half is lighted by nine glass panes surrounded by ten-pane sidelights and a six-pane transom. Three sets of three, six-over-six, double-hung windows light the remainder of the elevation to the north.

Five six-over-six, double-hung windows fenestrate the northern elevation. They are arranged in two sets of two with the single window located near the eastern corner. The windows and the large, louvered attic vent are trimmed with buff brick. The eastern elevation contains a shed roof covered entrance just north of center. The shed roof, an extension of the normal roofline, is supported by two ornate brackets. The single-leaf door contains a six-pane upper half and is reached by five concrete steps. The entrance is trimmed with buff brick consistent with the established pattern. Four six-over-six, double-hung windows are located south of the entrance. Two are located just under the eaves, and the other two are located side by side near the southern corner. All are trimmed with buff brick.

The southern elevation is lighted by three six-over-six, double-hung windows. Two of the buff brick-trimmed windows and the large, louvered attic vent are located west of the exterior chimney.

The building is currently in use by the Quitman School District.

United States Department of the Interior
National Park Service

National Register of Historic Places Continuation Sheet

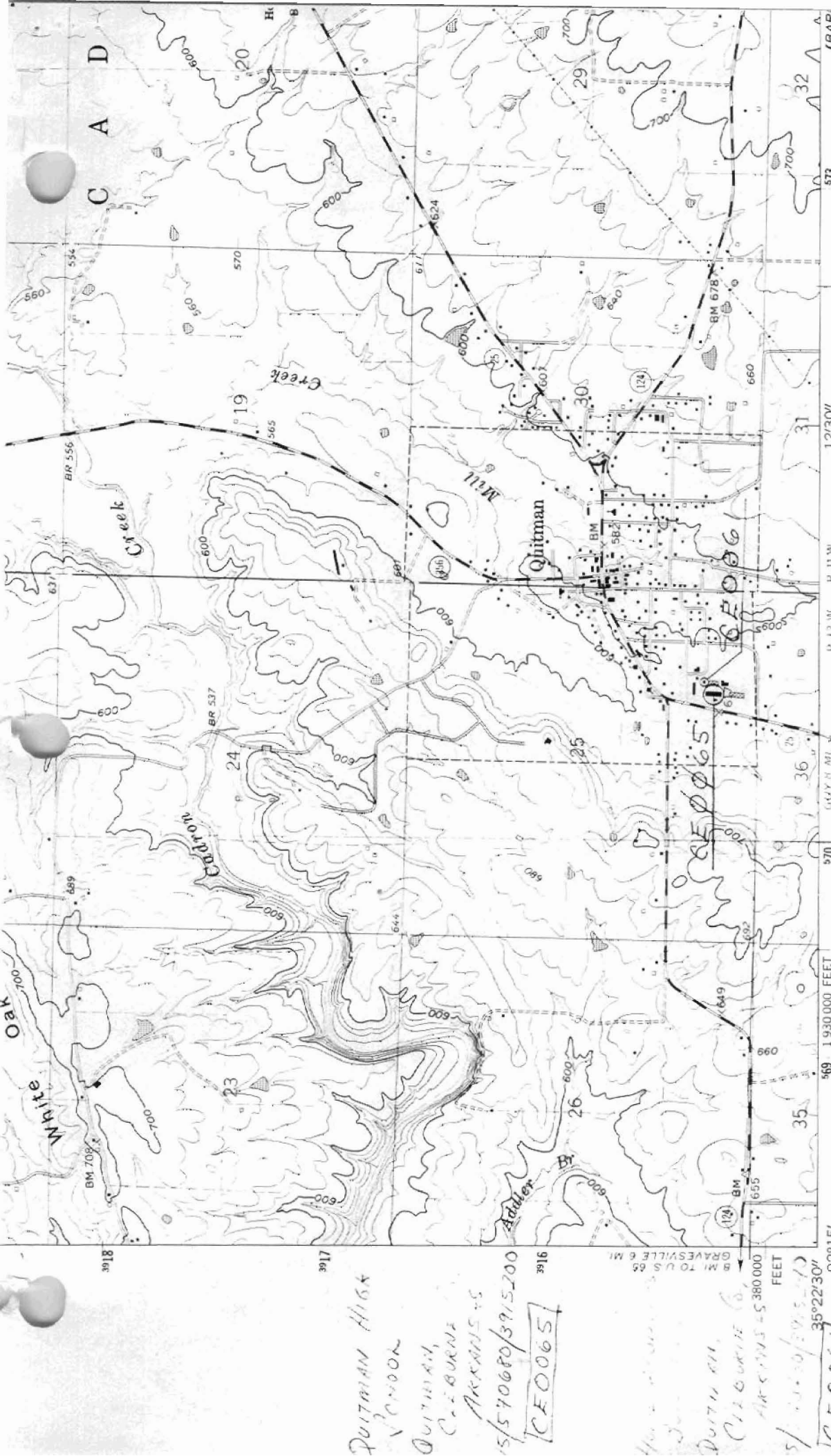
Section number 8 Page 1

Quitman Home Economics Building

As work continued on the W.P.A. construction of the new Quitman School Building, Project No. 315953 was approved in Little Rock, to "[c]onstruct a school building in the town of Quitman, Cleburne Co., and perform work appurtenant and incidental thereto." The construction of what would eventually become the Quitman School's Home Economics Building was described in the W.P.A. Central Files as "[i]n addition to projects specifically approved," in an apparent reference to the school building already under construction. A total of \$7,641 was allocated as the federal portion of the construction and labor costs, to be matched by a \$700 contribution from the Quitman School District.¹

The Quitman Home Economics Building, constructed in 1938 during the period covered by the historic context *The Evolution of the Public School System in the Arkansas Ozarks, 1920-1940*, is a representative example of a small stone school building constructed for a rural school district. Its documented construction by the W.P.A. and its use during this period as a local school building clearly identify it with this historic context and with this property type. It is significant locally under Criterion A through its direct associations with both the history of the evolution of the public school system in the Ozark Mountain region of the state during this period and the N.Y.A.

¹U.S., Works Progress Administration, "Central Office Files, 1936-1940," National Archives, Washington, DC.



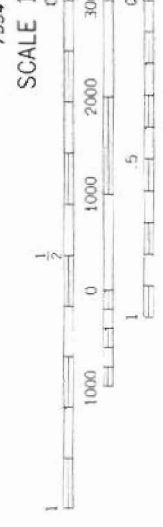
Mapped, edited, and published by the Geological Survey
 Control by USGS and USC&GS

Topography by photogrammetric methods from aerial
 photographs taken 1960. Field checked 1963

Polyconic projection. 1927 North American datum
 10,000-foot grid based on Arkansas coordinate system, north zone
 1000-metre Universal Transverse Mercator grid ticks,
 zone 15, shown in blue

Area covered by dashed light blue pattern
 is subject to controlled inundation

Fine red dashed lines indicate selected fence and field lines where
 generally visible on aerial photographs. This information is unchecked



CONTOUR INTE
 NATIONAL GEODETIC VE

THIS MAP COMPLIES WITH NATIO
 FOR SALE BY U. S. GEOLOGICAL SURVEY, DENVER
 AND ARKANSAS GEOLOGICAL COMMISS
 A FOLDER DESCRIBING TOPOGRAPHIC MAPS

*QUITMAN HIGH
 VANDER
 QUITMAN,
 CLEBURNA
 ARKANSAS
 15/570680/3915200
 [CE0065]*

*QUITMAN
 CLEBURNA
 ARKANSAS
 15/570680/3915200
 [CE0061]*

UTM GRID AND 1975 MAGNETIC NORTH
 DECLINATION AT CENTER OF SHEET