

Book Copy

NR Listed 5/18/95

United States Department of the Interior
National Park Service

NATIONAL REGISTER OF HISTORIC PLACES
REGISTRATION FORM

=====

1. Name of Property

=====

historic name: State Highway 274 Bridge

other name/site number: CA0023

=====

2. Location

=====

street & number: State Highway 274 at its crossing of Little Cypress Creek

not for publication: N/A

city/town: Thornton

vicinity: X

state: AR county: Calhoun code: AR 013 zip code: 71766

=====

3. Classification

=====

Ownership of Property: Public-state

Category of Property: Structure

Number of Resources within Property:

Contributing	Noncontributing	
_____	_____	buildings
_____	_____	sites
<u>1</u>	_____	structures
_____	_____	objects
<u>+</u>	<u>0</u>	Total

Number of contributing resources previously listed in the National Register: N/A

Name of related multiple property listing: Historic Bridges of Arkansas

=====
4. State/Federal Agency Certification
=====

As the designated authority under the National Historic Preservation Act of 1986, as amended, I hereby certify that this X nomination _____ request for determination of eligibility meets the documentation standards for registering properties in the National Register of Historic Places and meets the procedural and professional requirements set forth in 36 CFR Part 60. In my opinion, the property X meets _____ does not meet the National Register Criteria. _____ See continuation sheet

Cathryn A. Slater _____ 4-5-95
Signature of certifying official Date

Arkansas Historic Preservation Program
State or Federal agency and bureau

In my opinion, the property _____ meets _____ does not meet the National Register criteria. _____ See continuation sheet.

Signature of commenting or other official Date

State or Federal agency and bureau

=====
5. National Park Service Certification
=====

I, hereby certify that this property is:

____ entered in the National Register _____
____ See continuation sheet. _____
____ determined eligible for the _____
National Register _____
____ See continuation sheet. _____
____ determined not eligible for the _____
National Register _____
____ removed from the National Register _____
____ other (explain): _____

Signature of Keeper Date
of Action

=====
6. Function or Use
=====

Historic: TRANSPORTATION Sub: Road-related

Current: TRANSPORTATION Sub: Road-related

=====
7. Description
=====

Architectural Classification:

Other

Other Description: Timber trestle

Materials:	foundation	<u>Wood</u>	roof	<u>N/A</u>
	walls	<u>Wood balustrade</u>	other	<u>Wood timber and asphalt deck</u>

Describe present and historic physical appearance. X See continuation sheet.

=====
8. Statement of Significance
=====

Certifying official has considered the significance of this property in relation to other properties: Local.

Applicable National Register Criteria: C

Criteria Considerations (Exceptions): N/A

Areas of Significance: ENGINEERING

Period(s) of Significance: 1940-1945

Significant Dates: 1940

Significant Person(s): N/A

Cultural Affiliation: N/A

Architect/Builder: Unknown

State significance of property, and justify criteria, criteria considerations, and areas and periods of significance noted above.
X See continuation sheet.

=====
9. Major Bibliographical References
=====

See "Historic Bridges of Arkansas" MPS Nomination, Section H.

See continuation sheet.

Previous documentation on file (NPS):

- preliminary determination of individual listing (36 CFR 67) has been requested.
- previously listed in the National Register
- previously determined eligible by the National Register
- designated a National Historic Landmark
- recorded by Historic American Buildings Survey #
- recorded by Historic American Engineering Record #

Primary Location of Additional Data:

- X State historic preservation office
- Other state agency
- Federal agency
- Local government
- University
- Other -- Specify Repository:

=====
10. Geographical Data
=====

Acreage of Property: Less than one

Table with 6 columns: UTM References, Zone, Easting, Northing, Zone, Easting, Northing. Rows A, B, C, D.

See continuation sheet.

Verbal Boundary Description: See continuation sheet.

Beginning at a point formed by the intersection of the northern edge of State Highway 274 with a perpendicular line running parallel with the eastern end of the bridge and located approximately 25 feet to the east thereof, proceed northerly for a distance of approximately 25 feet to its intersection with a perpendicular line running parallel with the bridge's northern side; thence proceed westerly along said line for a distance of approximately 155 feet to its intersection with a perpendicular line; thence proceed southerly along said line for a distance of approximately 81 feet to its intersection with a perpendicular line; thence proceed northerly along said line for a distance of approximately 155 feet to its intersection with a perpendicular line; thence proceed westerly to the point of beginning.

Boundary Justification: See continuation sheet.

This boundary includes all the property historically associated with this resource.

=====
11. Form Prepared By
=====

Name/Title: Ken Story, National Register/Survey Coordinator
Organization: Arkansas Historic Preservation Program Date: 04/04/95
Street & Number: 323 Center Street, Suite 1500 Telephone: (501) 324-9880
City or Town: Little Rock State: AR Zip: 72201

United States Department of the Interior
National Park Service

National Register of Historic Places Continuation Sheet

Section number 8 Page 1

Significance

Constructed in 1940, the State Highway 274 Bridge is associated with the *World War II Era* historic context and is of the timber wooden trestle type. Though the identity of its original designer does not survive, it was constructed in conjunction with the Arkansas State Highway Commission and thus may well have been designed by one of that state agency's engineers. Given its relatively intact condition it retains sufficient integrity to remain associated with its historic period and is thus locally eligible under Criterion C.

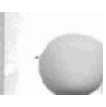
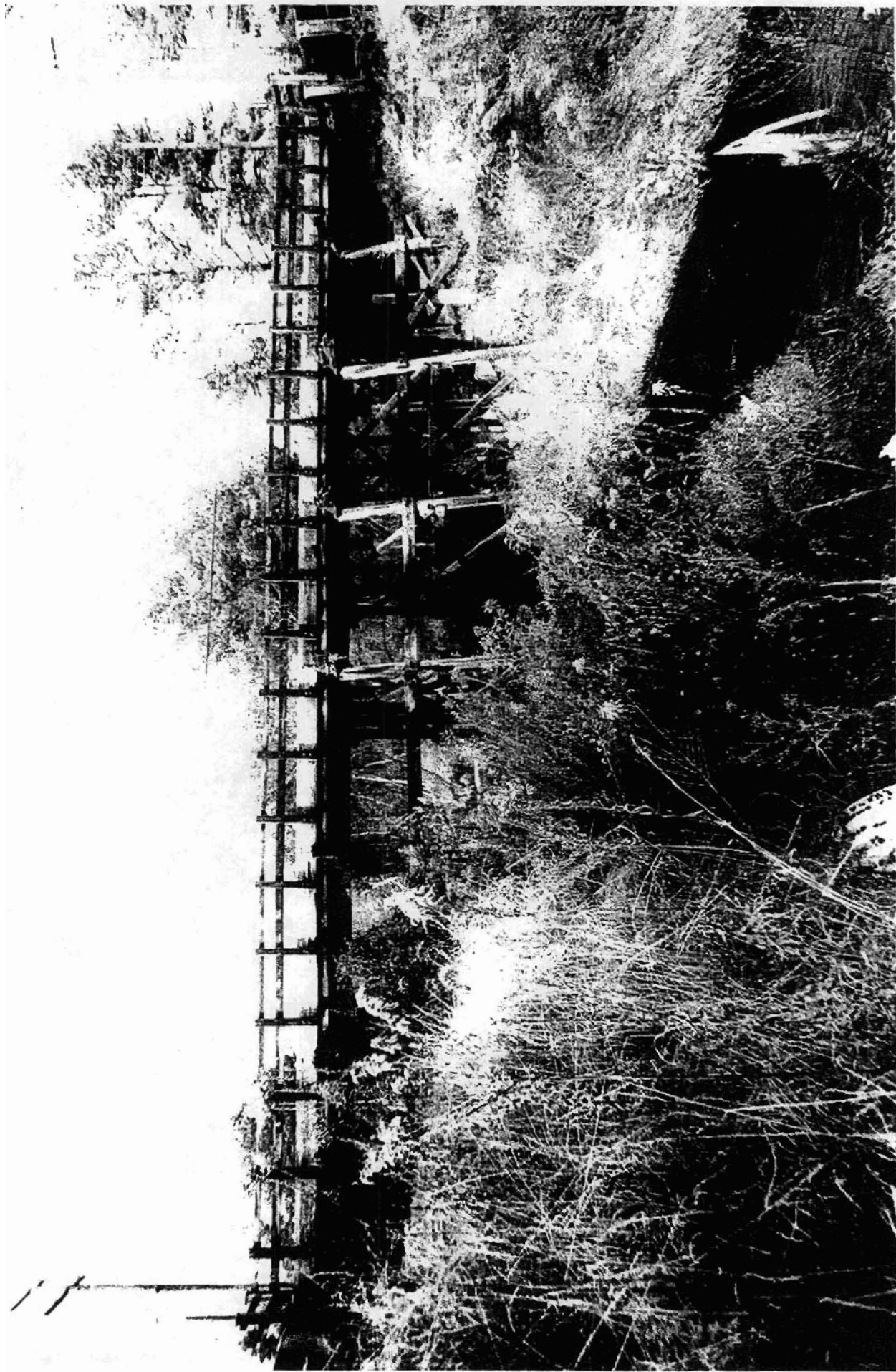
United States Department of the Interior
National Park Service

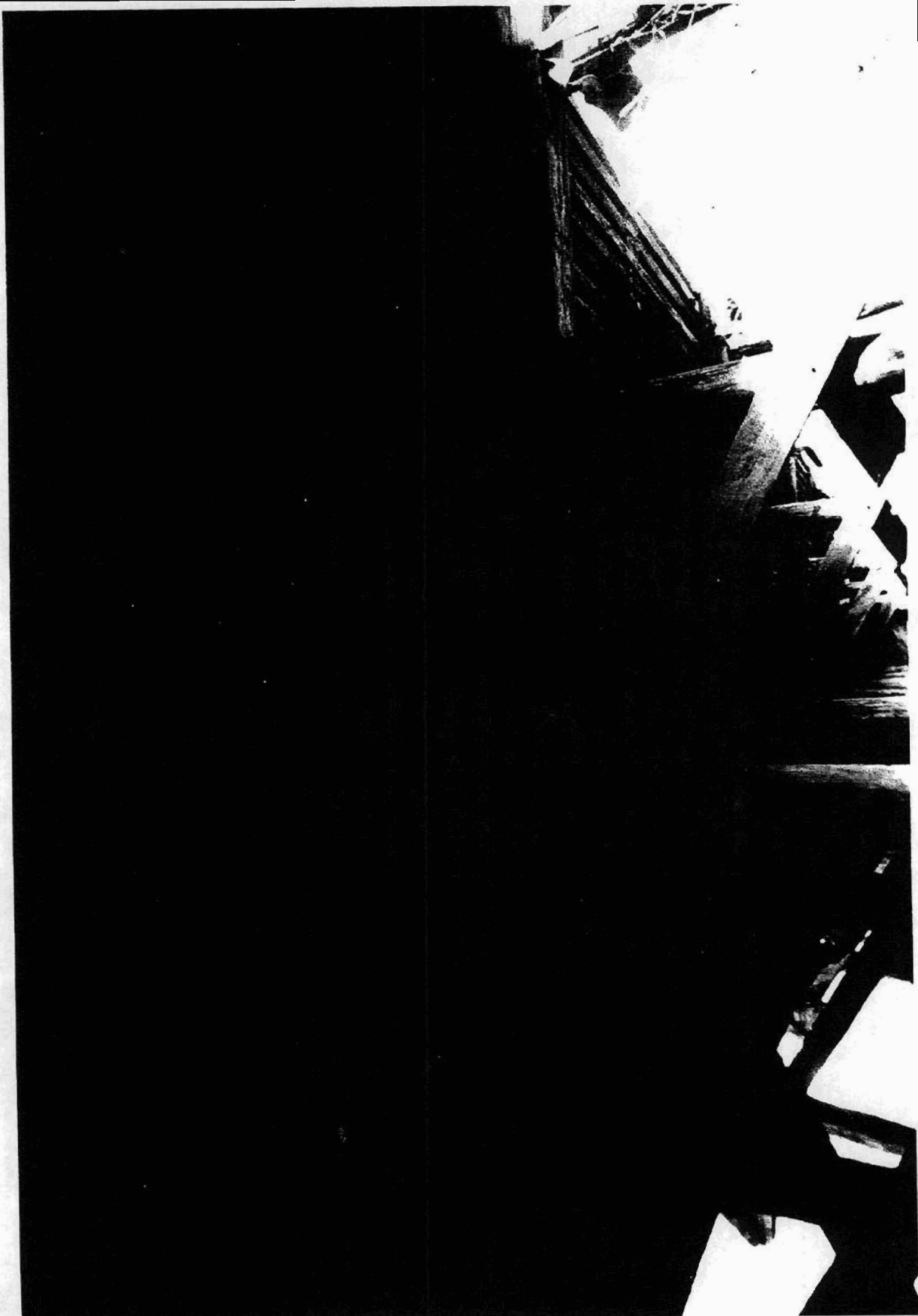
National Register of Historic Places Continuation Sheet

Section number 7 Page 1

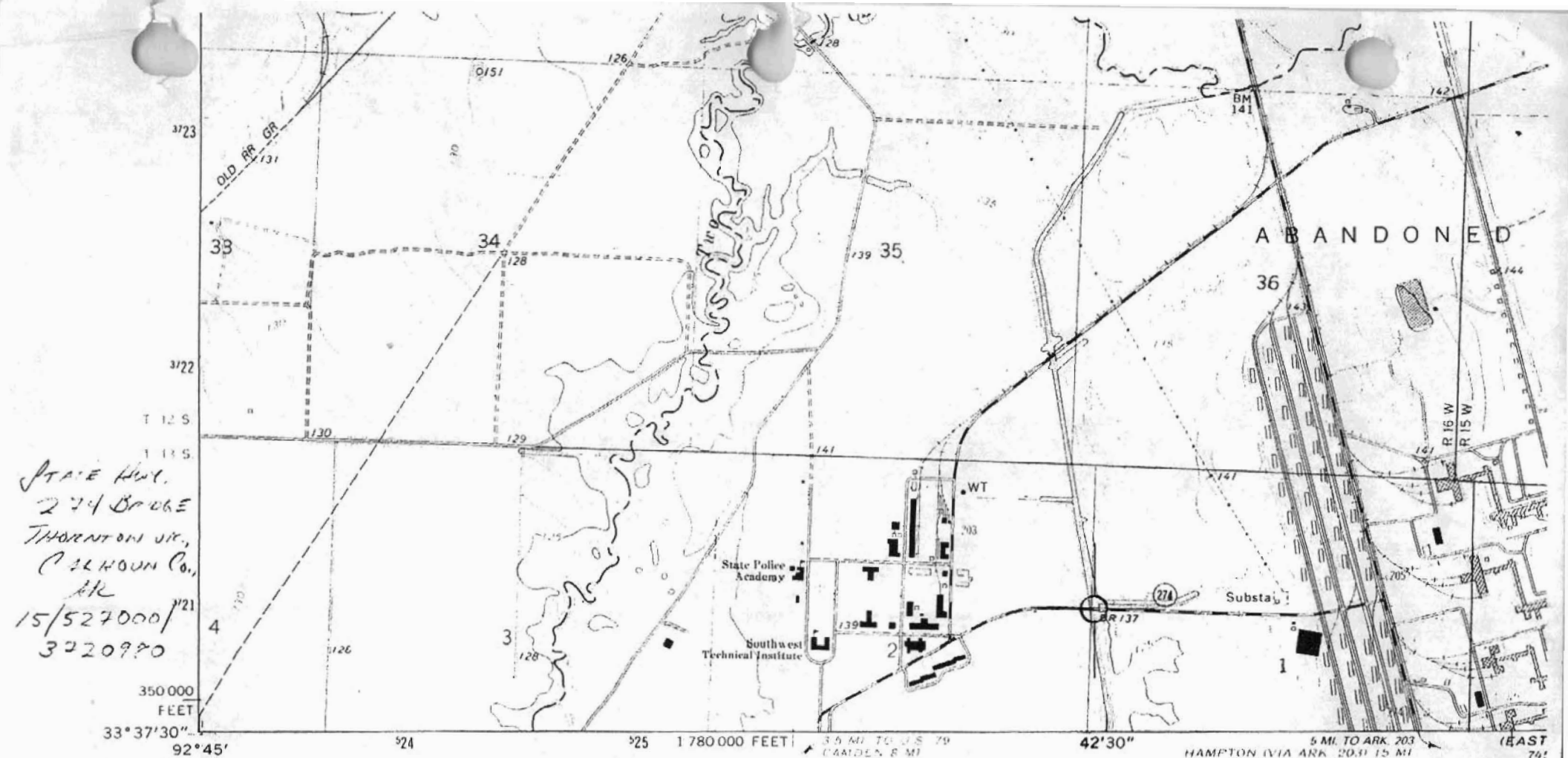
Description

Located on State Highway 274 at the point where it crosses an unnamed ditch (approximately 1/4 mile from its junction with state Highway 203), the State Highway 274 Bridge is of the timber trestle type. It consists of a total of seven spans, the longest of which is 15 feet. Its total length is 105 feet, its deck width is 28.4 feet and its overall width is 31 feet. Its abutments and piers are constructed of wood and its deck material is wood timber covered with asphalt. A simple wood rail balustrade runs the full length of each edge of the deck.









Mapped, edited, and published by the Geological Survey

Control by USGS and NOS/NOAA

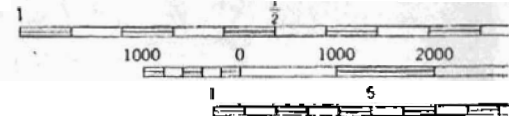
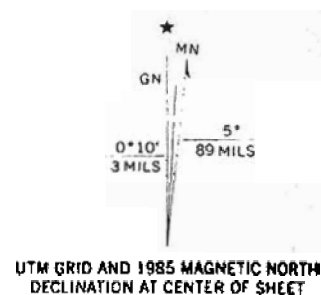
Topography by photogrammetric methods from aerial photographs taken 1972. Field checked 1973

Projection and 10,000-foot grid ticks: Arkansas coordinate system, south zone (Lambert conformal conic)
 1000-meter Universal Transverse Mercator grid ticks, zone 15, shown in blue. 1927 North American datum

Fine red dashed lines indicate selected fence and field lines where generally visible on aerial photographs. This information is unchecked

To place on the predicted North American Datum move the projection lines 10 meters south and 15 meters east as shown by dashed corner ticks

Revisions shown in purple compiled from aerial photographs taken 1984 and other sources. This information not field checked. Map edited 1985



CONTOUR IN NATIONAL GEODETIC

THIS MAP COMPLIES WITH N/ FOR SALE BY U. S. GEOLOGICAL SURVEY, DEN AND ARKANSAS GEOLOGICAL COMI A FOLDER DESCRIBING TOPOGRAPHIC MA

(CAMDEN)
 7451 III SE