

United States Department of the Interior
National Park Service

NATIONAL REGISTER OF HISTORIC PLACES
REGISTRATION FORM

=====

1. Name of Property

=====

historic name: Everton School

other name/site number: BO0073

=====

2. Location

=====

street & number: Main Street

not for publication: N/A

city/town: Everton

vicinity: N/A

state: AR county: Boone code: AR 009 zip code: 72633

=====

3. Classification

=====

Ownership of Property: Private

Category of Property: Building

Number of Resources within Property:

Contributing	Noncontributing	
<u>1</u>	_____	buildings
_____	_____	sites
_____	_____	structures
_____	_____	objects
<u>1</u>	<u>0</u>	Total

Number of contributing resources previously listed in the National Register: N/A

Name of related multiple property listing: Public Schools in the Arkansas Ozarks, 1920-1940

=====
4. State/Federal Agency Certification
=====

As the designated authority under the National Historic Preservation Act of 1986, as amended, I hereby certify that this X nomination _____ request for determination of eligibility meets the documentation standards for registering properties in the National Register of Historic Places and meets the procedural and professional requirements set forth in 36 CFR Part 60. In my opinion, the property X meets _____ does not meet the National Register Criteria. _____ See continuation sheet.

Cathryn A. Byrd _____ 8-2-92 _____
Signature of certifying official Date

Arkansas Historic Preservation Program _____
State or Federal agency and bureau

In my opinion, the property _____ meets _____ does not meet the National Register criteria. _____ See continuation sheet.

Signature of commenting or other official Date

State or Federal agency and bureau

=====
5. National Park Service Certification
=====

I, hereby certify that this property is:

_____ entered in the National Register _____
_____ See continuation sheet. _____
_____ determined eligible for the _____
National Register _____
_____ See continuation sheet. _____
_____ determined not eligible for the _____
National Register _____
_____ removed from the National Register _____
_____ other (explain): _____

Signature of Keeper Date
of Action

=====
6. Function or Use
=====

Historic: EDUCATION _____ Sub: School _____

Current: RELIGION _____ Sub: Religious facility _____

=====

7. Description

=====

Architectural Classification:

Craftsman

Other Description: N/A

Materials: foundation Concrete roof Asphalt
walls Stone other N/A

Describe present and historic physical appearance. X See continuation sheet.

=====

8. Statement of Significance

=====

Certifying official has considered the significance of this property in relation to other properties: Locally.

Applicable National Register Criteria: A

Criteria Considerations (Exceptions): A

Areas of Significance: EDUCATION
SOCIAL HISTORY

Period(s) of Significance: 1938-1940

Significant Dates: N/A

Significant Person(s): N/A

Cultural Affiliation: N/A

Architect/Builder: Works Progress Administration

State significance of property, and justify criteria, criteria considerations, and areas and periods of significance noted above. X See continuation sheet.

=====

9. Major Bibliographical References

=====

See "Public Schools in the Arkansas Ozarks, 1920-1940" Multiple Property Form, Section H.

___ See continuation sheet.

Previous documentation on file (NPS):

- preliminary determination of individual listing (36 CFR 67) has been requested.
- previously listed in the National Register
- previously determined eligible by the National Register
- designated a National Historic Landmark
- recorded by Historic American Buildings Survey # _____
- recorded by Historic American Engineering Record # _____

Primary Location of Additional Data:

- State historic preservation office
- Other state agency
- Federal agency
- Local government
- University
- Other -- Specify Repository: _____

=====

10. Geographical Data

=====

Acreage of Property: Less than one

UTM References: Zone Easting Northing Zone Easting Northing

A	<u>15</u>	<u>508380</u>	<u>4000750</u>	B	___	___	___
C	___	___	___	D	___	___	___

___ See continuation sheet.

Verbal Boundary Description: ___ See continuation sheet.

Beginning at a point formed by the intersection of a line running along the western edge of Main Street with a perpendicular line running parallel with the building's southern elevation and located 50 feet to the south thereof, proceed westerly along said line for a distance of approximately 200 feet to its intersection with a perpendicular line running parallel to the building's western elevation; thence proceed northerly along said line for a distance of approximately 200 feet to its intersection with a line running parallel to the building's northern elevation; thence proceed easterly along said line for a distance of approximately 200 feet to its intersection with a perpendicular line running along the western edge of Main Street; thence proceed southerly along said line for a distance of approximately 200 feet to the point of beginning.

Boundary Justification: ___ See continuation sheet.

This boundary includes both the historic resource and all the surrounding property known to have been historically associated therewith that retains its integrity.

=====

11. Form Prepared By

=====

Name/Title: Kenneth Story, National Register Coordinator

Organization: Arkansas Historic Preservation Program Date: July 16, 1992

Street & Number: 225 E. Markham, Suite 300 Telephone: (501) 324-9346

City or Town: Little Rock State: AR ZIP: 72201

United States Department of the Interior
National Park Service

National Register of Historic Places Continuation Sheet

Section number 7 Page 1

Summary

The Everton School is a single story, fieldstone masonry classroom structure designed in a vernacular interpretation of the Craftsman style. Its rectangular plan is relieved only by the rectangular, projecting entrance bay in the center of the eastern or front facade. The gable-on-hip roof is covered with asphalt shingles, the walls are constructed of fieldstone, and continuous cast concrete foundation supports the structure.

Elaboration

The Everton School is a single story, fieldstone masonry classroom structure designed in a vernacular interpretation of the Craftsman style. Its rectangular plan is relieved only by the rectangular, projecting entrance bay in the center of the eastern or front facade. The gable-on-hip roof is covered with asphalt shingles, the walls are constructed of fieldstone, and continuous cast concrete foundation supports the structure.

The eastern or front elevation is composed of a square stone entrance bay placed centrally in the wall and evenly dividing the facade. The entrance bay projects both out from the wall surface and above the cornice of the wall behind. The rectangular opening leads directly to the double-leaf entrance with twelve-pane transom behind. The wall to the south of the entrance is lighted with just two nine-over-nine wood sash windows; to the north, two groups of four windows each are followed by another of two windows to finish the elevation. The western elevation opposite is symmetrically-divided into three window bays of six windows each.

The northern elevation is accessed via a double-leaf entry set into a square entrance bay identical to that seen on the eastern elevation. The wall is lighted by but one window, placed to the east of the entrance. The southern elevation opposite is accessed via a single-leaf entrance with a six-pane transom, placed just to the west of center, and lighted by a bank of six double-hung windows placed to the east. A projecting shed roof covers the entrance.

The Everton School has suffered virtually no changes to its exterior appearance since it was constructed. It is in very good condition.

United States Department of the Interior
National Park Service

National Register of Historic Places Continuation Sheet

Section number 8 Page 1

Everton School

"1939 will long be remembered in Everton and with much pride because it marks the completion of our beautiful new school building through the cooperation of the W.P.A., local school board and our entire citizenship...This new structure was made possible by the united efforts of a public spirited citizenry and the unstinted cooperation of the federal government through its agency, the Works Progress Administration. With the completion of this plant the Everton district is adequately equipped to take care of the youth within her present and extended borders..."

The first school in Everton was established around the turn of the century, and in 1903 a new school house was erected on a hill to the southwest of the Missouri & North Arkansas depot that was responsible for the community's existence. The original frame school house burned in the late 1910's, and the brick building that replaced it served the community for almost two decades until "[f]or numerous good reasons the brick school was razed in 1938" and replaced by a new W.P.A. structure. Much of the original building material from the 1920 school was utilized in the "most beautiful and modern" 1938 facility, constructed of "native ruble (sic) stone veneer."

The new school's dedication in April, 1939, was a major local event, including a country style banquet, a speech by the state's W.P.A. Administrator, Floyd Sharp, and the reading of a poem penned especially for the occasion by Mrs. R. W. Milum:

"We dedicate this school today
Huge piles of stone heaped Heavenward,..."

The Everton School Building served as a high school for only seven years, and in 1959 the entire Everton School District consolidated with the Valley Springs School district, and the school building was sold to the Everton Methodist Church for \$2,500. It is currently used as a church building and sanctuary hall, and was recently remodeled in 1990.¹

The Everton School, constructed during the period covered by the historic context *The Evolution of the Public School System in the Arkansas Ozarks, 1920-1940*, is a representative

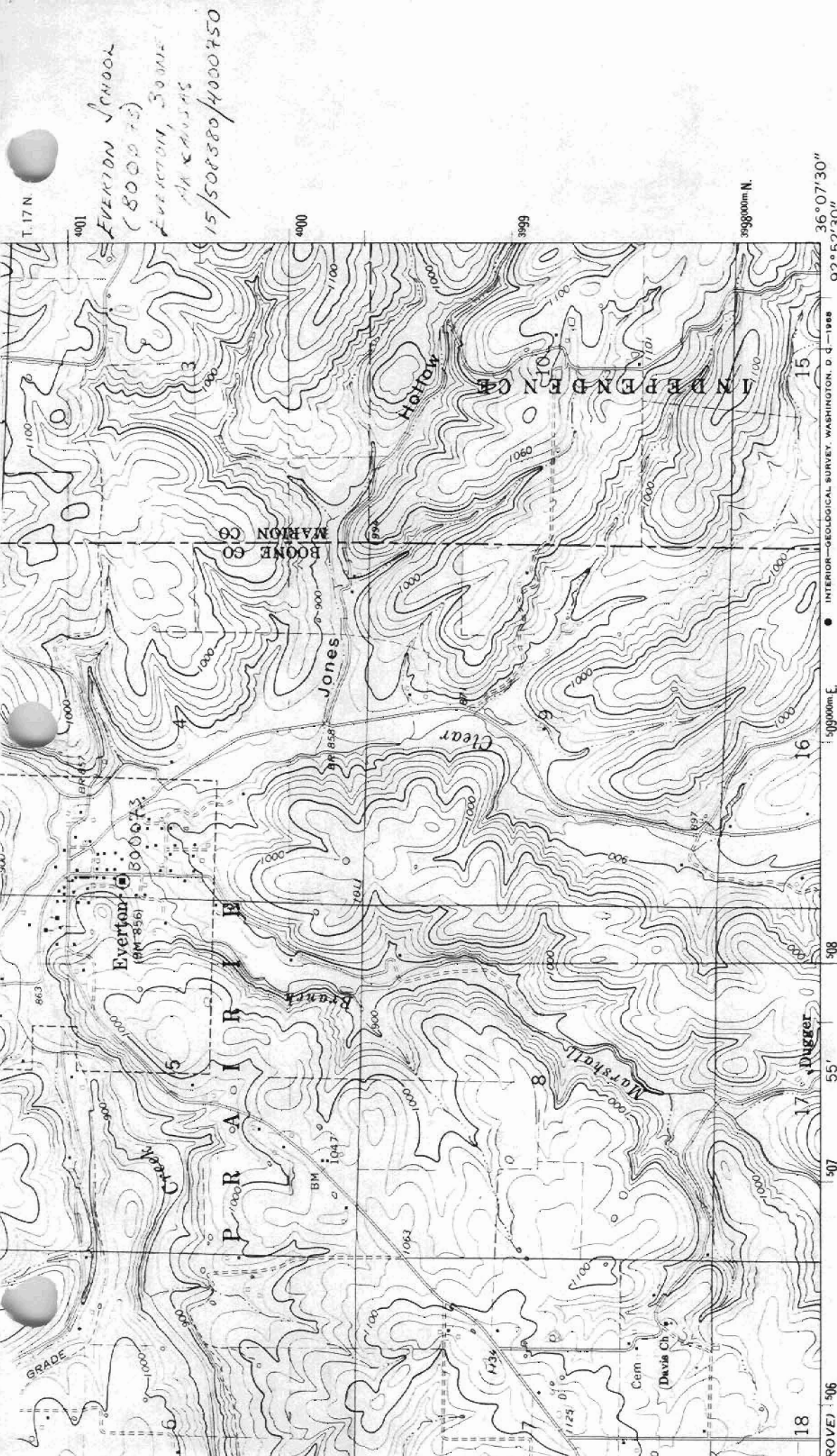
¹Souvenir Program of Presentation and Dedication of the new Everton School Building, W. B. Mallard, (Everton, Arkansas: April 27, 1939). The "numerous good reasons" for the razing of the 1920 school building are not elucidated.

**United States Department of the Interior
National Park Service**

National Register of Historic Places Continuation Sheet

Section number 8 Page 2

example of a small stone school building constructed for a rural school district. Its documented construction by the W.P.A. and its use during this period as a local school building clearly identify it with this historic context and with this property type. It is significant locally under Criterion A through its direct associations with both the history of the evolution of the public school system in the Ozark Mountain region of the state during this period and the W.P.A.



(ST. JOE)
7456 III SE

ROAD CLASSIFICATION

Heavy-duty ——— Light-duty ———

Unimproved dirt - - - - -

U. S. Route

36° 07' 30"

92° 52' 30"

INTERIOR—GEOLOGICAL SURVEY, WASHINGTON, D. C.—1968

599000m E

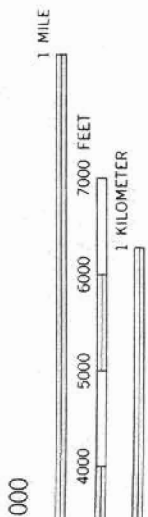
508

55

507

18

17



4000
5000
6000
7000 FEET
SEA LEVEL



QUADRANGLE LOCATION

EVERTON, ARK.
N3607.5—W9252.5/7.5
1967

MAP ACCURACY STANDARDS
OLORADO 80225, OR WASHINGTON, D. C. 20242
SSION, LITTLE ROCK, ARKANSAS 72201
D SYMBOLS IS AVAILABLE ON REQUEST

EVERTON SCHOOL
(800075)
EVERTON, BOONE
ARKANSAS
15/508380/4000750