

United States Department of the Interior
National Park Service

NR 1-24-07

National Register of Historic Places
Registration Form

This form is for use in nominating or requesting determinations for individual properties and districts. See instructions in *How to Complete the National Register of Historic Places Registration Form* (National Register Bulletin 16A). Complete each item by marking "x" in the appropriate box or by entering the information requested. If an item does not apply to the property being documented, enter "N/A" for "not applicable." For functions, architectural classification, materials, and areas of significance, enter only categories and subcategories from the instructions. Place additional entries and narrative items on continuation sheets (NPS Form 10-900a). Use a typewriter, word processor, or computer, to complete all items.

1. Name of Property

historic name Coon Creek Bridge

other names/site number BE3602/ AHTD #18577

2. Location

street & number County Road 24 not for publication

city or town Cherokee City vicinity

state Arkansas code AR county Benton code 007 zip code N/A

3. State/Federal Agency Certification

As the designated authority under the National Historic Preservation Act, as amended, I hereby certify that this nomination request for determination of eligibility meets the documentation standards for registering properties in the National Register of Historic Places and meets the procedural and professional requirements set for in 36 CFR Part 60. In my opinion, the property meets does not meet the National Register criteria. I recommend that this property be considered significant

nationally statewide locally. (See continuation sheet for additional comments.)

[Signature]
Signature of certifying official/Title

11/15/06
Date

Arkansas Historic Preservation Program
State or Federal agency and bureau

In my opinion, the property meets does not meet the National Register criteria. (See Continuation sheet for additional comments.)

Signature of certifying official/Title

Date

State or Federal agency and bureau

4. National Park Service Certification

I hereby certify that the property is:

entered in the National Register
 See continuation sheet

determined eligible for the National Register.
 See continuation sheet

determined not eligible for the National Register

removed from the National Register.

other, (explain:) _____

Signature of the Keeper

Date of Action

Coon Creek Bridge
Name of Property

Benton County, Arkansas
County and State

5. Classification

Ownership of Property
(Check as many boxes as apply)

- private
- public-local
- public-State
- public-Federal

Category of Property
(Check only one box)

- building(s)
- district
- site
- structure
- object

Number of Resources within Property
(Do not include previously listed resources in count.)

Contributing Noncontributing

Contributing	Noncontributing	
_____	_____	buildings
_____	_____	sites
1	_____	structures
_____	_____	objects
1	_____	Total

Name of related multiple property listing
(Enter "N/A" if property is not part of a multiple property listing.)

**Number of Contributing resources previously listed
in the National Register**

Historic Bridges of Arkansas

6. Function or Use

Historic Functions
(Enter categories from instructions)

TRANSPORTATION/road-related(vehicular)/bridge

Current Functions
(Enter categories from instructions)

TRANSPORTATION/road-related(vehicular)/bridge

7. Description

Architectural Classification
(Enter categories from instructions)

Other/Warren Pony truss

Materials
(Enter categories from instructions)

foundation Concrete

walls _____

roof _____

other Steel

Narrative Description

(Describe the historic and current condition of the property on one or more continuation sheets.)

Coon Creek Bridge

Name of Property

Benton County, Arkansas

County and State

8. Statement of Significance

Applicable National Register Criteria

(Mark "x" in one or more boxes for the criteria qualifying the property for National Register listing.)

- A Property is associated with events that have made a significant contribution to the broad patterns of our history.
B Property is associated with the lives of persons significant in our past.
C Property embodies the distinctive characteristics of a type, period, or method of construction or represents the work of a master, or possesses high artistic values, or represents a significant and distinguishable entity whose components lack individual distinction.
D Property has yielded, or is likely to yield, information important in prehistory or history.

Criteria Considerations

(Mark "x" in all the boxes that apply.)

Property is:

- A owned by a religious institution or used for religious purposes.
B removed from its original location.
C birthplace or grave of a historical figure of outstanding importance.
D a cemetery.
E a reconstructed building, object, or structure.
F a commemorative property
G less than 50 years of age or achieved significance within the past 50 years.

Levels of Significance (local, state, national)

Local

Areas of Significance (Enter categories from instructions)

Engineering

Transportation

Period of Significance

1930-1957

Significant Dates

1930-1957

Significant Person (Complete if Criterion B is marked)

Cultural Affiliation (Complete if Criterion D is marked)

Architect/Builder

unknown

Narrative Statement of Significance

(Explain the significance of the property on one or more continuation sheets.)

9. Major Bibliographical References

Bibliography

(Cite the books, articles, and other sources used in preparing this form on one or more continuation sheets.)

Previous documentation on file (NPS):

- preliminary determination of individual listing (36 CFR 67) has been requested
previously listed in the National Register
Previously determined eligible by the National Register
designated a National Historic Landmark
recorded by Historic American Buildings Survey #
recorded by Historic American Engineering Record #

Primary location of additional data:

- State Historic Preservation Office
Other State Agency
Federal Agency
Local Government
University
Other

Name of repository:

Arkansas State Highway & Transportation Department

Coon Creek Bridge

Name of Property

Benton County, Arkansas

County and State

United States Department of the Interior
National Park Service

National Register of Historic Places Continuation Sheet

Section number 7 Page 1

Summary

The bridge detailed in this nomination is located on County Road 24 at the crossing of Coon Creek. It is an example of a Warren Pony truss bridge in Benton County and is northeast of Cherokee City. It consists of one main truss and is 57 feet long.

Elaboration

Located northeast of Cherokee City the bridge is on County Road 24, the bridge is a Warren Pony truss and spans north to south over the creek. The Warren truss was patented in 1848 by two British engineers and was adopted by American bridge designers. The truss design consists of diagonals that carry both compressive and tensile forces. The Warren truss is most easily recognized by its triangular outline.

The bridge consists of one main span that measures 57 feet long, with a deck width of 13.4 feet, and the bridge rest on concrete abutments.

Integrity

The bridge is still used today for traffic and is in good condition. The bridge was built in 1930 and was rehabilitated in 1976. The bridge is located on a gravel road, so the bridges setting today looks much the same as it did in 1930. It continues to carry light traffic on County Road 24 and is a classic example of a Warren Pony truss.

United States Department of the Interior
National Park Service

National Register of Historic Places Continuation Sheet

Section number 8 Page 1

Summary

The Coon Creek Bridge was built in 1930, and is an excellent example of a Warren Pony truss in Benton County. For this reason it is being nominated to the National Register of Historic Places with **local significance under Criterion C**. It is also being nominated for **Criterion A** for its role in early vehicular transportation in Benton County. It is also being nominated under the multiple properties listing "Historic Bridges of Arkansas" and under the associated historic context "Arkansas Highway and Transportation Department Era: 1923-1939."

Elaboration

Benton County lies in the extreme northwestern corner of Arkansas with Missouri being its border to the north and Oklahoma to the west. Settlers from all around came to this area in the early 1800's, mainly from Tennessee, Kentucky, Georgia, the Carolinas, Illinois and Ohio. Adam Batie is believed to be the first settler in Benton County. He settled on the prairie that now bears his name, near the present site of Maysville. This territory was still occupied by many tribes of Indians as settlers moved on the land. The settlers were "squatters" until the federal government designated properties with the Homestead Act of 1862.

The first railroad was completed in 1880, and the St. Louis and San Francisco Railroad brought national advertisements about Benton County and its ability to grow all kinds of fruit, which brought in an influx of residents.

Cherokee City was first surveyed in 1880 by David Chandler for himself and James Ingle and M.D. Cunningham. Before the war Cherokee City was on the opposite side of the creek and it was known as "Hog Eye," and is where whiskey was kept to sell to the Native Americans. According to Benton County history the city was originally on the south bank of Hog Eye Creek and was moved to the north side of the creek due to a

United States Department of the Interior
National Park Service

National Register of Historic Places Continuation Sheet

Section number 8 Page 2

tornado. Goodspeed does note that Cherokee City experienced a boom in 1881 and 1882 and the town was built in a great hurry.

As highway transportation increased after the turn of the twentieth century, bridges were needed to cross the county's streams. In 1930, the county hired an unknown builder to build a bridge on County Road 24 over Coon Creek. By 1976 the bridge was in need of rehabilitation, but it did not compromise the integrity of the bridge. Today the bridge is still in use and provides transportation over Coon Creek on County Road 24.

Since the completion of the Coon Creek Bridge in 1930, no structural alterations have been made to the bridge to compromise its integrity. Today, County Road 24 remains a gravel road, used mainly by the local residents of the area, and the Coon Creek Bridge has been a vital crossing on the road for the residents in the area for approximately 75 years. The Coon Creek 6 Bridge remains an important transportation link in the area and a good example of an early twentieth-century Warren pony truss.

Statement of Significance

The Coon Creek Bridge, built in 1930, is being nominated to the National Register of Historic Places with **local significance** under **Criterion C**, and also for **Criterion A** for its role in early vehicular transportation around Benton County. It is also being nominated under the multiple properties listing "Historic Bridges of Arkansas" and under the associated historic context "Arkansas Highway and Transportation Department Era: 1923-1939."

Coon Creek Bridge

Name of Property

Benton County, Arkansas

County and State

United States Department of the Interior
National Park Service

National Register of Historic Places Continuation Sheet

Section number 9 Page 1

Bibliography

“2005 Steel Truss Reevaluation Section of the Arkansas Historic Bridge Inventory: Review and Evaluation Volume III.” Arkansas State Highway and Transportation Department. Copyright 2006. In the files of the Arkansas Historic Preservation Program.

Biographical and Historical Memoirs of Northwestern Arkansas. Chicago, Nashville, and St. Louis: The Goodspeed Publishing Co. 1890.

Benton County History. Benton County Heritage Committee: Rogers Arkansas 1991. Curtis Media Corporation-1991.

Comp, T. Allan and Donald Jackson, “Bridge Truss Types: a Guide to Dating and Identifying.” *History News*. Vol. 32, No.5: May 1977.

Gould, Joan. Nomination for Railroad Cottage in Benton County. From the Arkansas Historic Preservation Program files. 2004

Historic Bridges of the Midwest, 27 July 2005, <<http://bridges.midwestplaces.com/ar/benton/coon-creek/>>

Coon Creek Bridge

Name of Property

Benton County, Arkansas

County and State

United States Department of the Interior
National Park Service

National Register of Historic Places Continuation Sheet

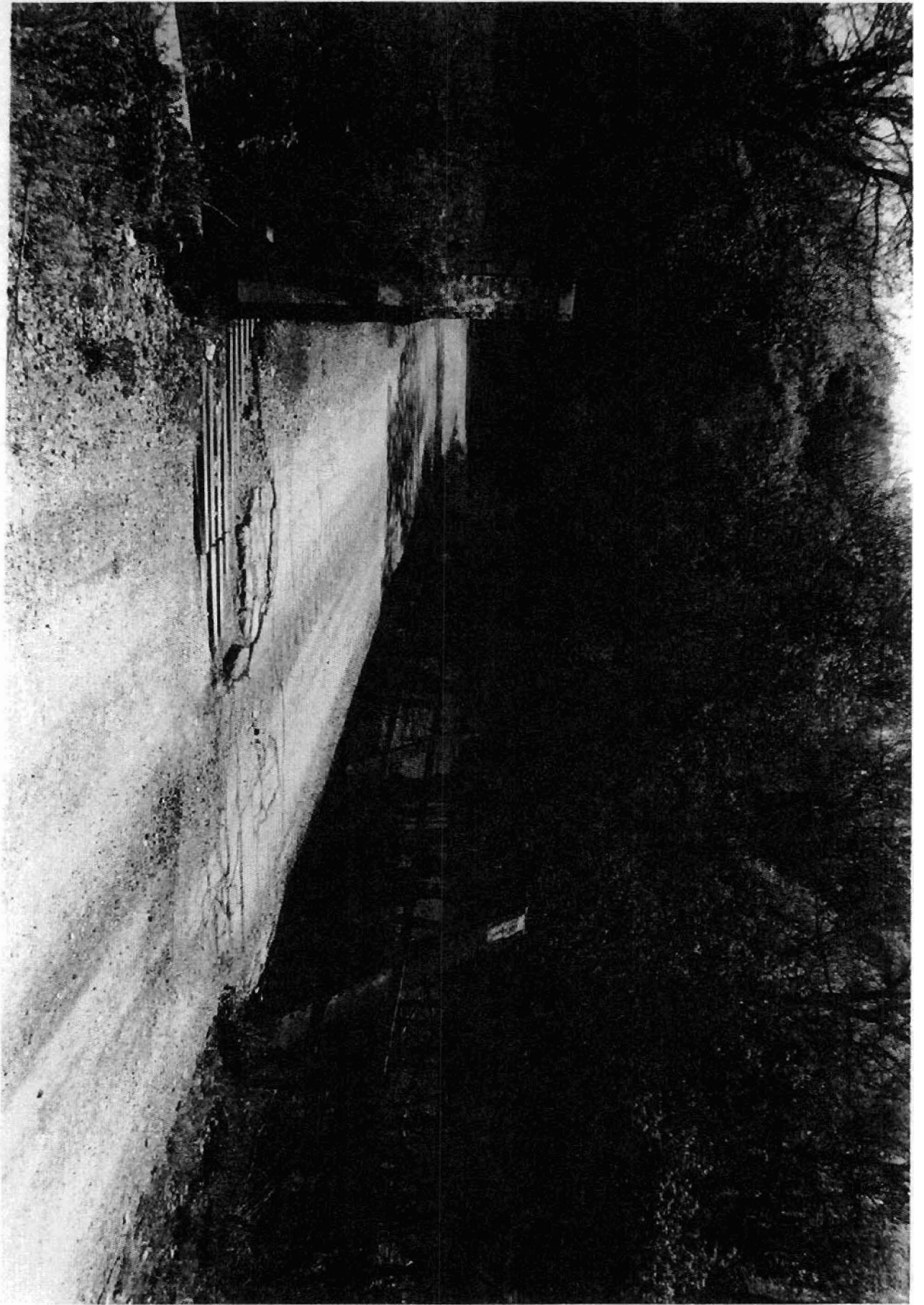
Section number 10 Page 1

Verbal Boundary Description

From a point on the south side of County Road 24 10 feet southeast of the southeast corner of the Coon Creek Bridge, proceed northwesterly 75 feet, then proceed northeasterly 40 feet, then proceed southeasterly 75 feet, then proceed southwesterly 40 feet to the point of beginning.

Boundary Justification

This boundary includes the Coon Creek Bridge and its immediate setting.







and other sources. This information not field checked. Map edited 1982

4021 F E 0-014 0117
07M
15/360517, 203
4017 17'30"

(GENTRY)
7156 1V SW

4017