

Listed 5/22/07

007000440

United States Department of the Interior  
National Park Service

National Register of Historic Places  
Registration Form

This form is for use in nominating or requesting determinations for individual properties and districts. See instructions in *How to Complete the National Register of Historic Places Registration Form* (National Register Bulletin 16A). Complete each item by marking "x" in the appropriate box or by entering the information requested. If an item does not apply to the property being documented, enter "N/A" for "not applicable." For functions, architectural classification, materials, and areas of significance, enter only categories and subcategories from the instructions. Place additional entries and narrative items on continuation sheets (NPS Form 10-900a). Use a typewriter, word processor, or computer, to complete all items.

1. Name of Property

historic name Old Gillett Jail

other names/site number Site #AR0212

2. Location

street & number 207 Main Street

not for publication

city or town Gillett

vicinity

state Arkansas

code AR

county Arkansas

code 001

zip code 72055

3. State/Federal Agency Certification

As the designated authority under the National Historic Preservation Act, as amended, I hereby certify that this  nomination  request for determination of eligibility meets the documentation standards for registering properties in the National Register of Historic Places and meets the procedural and professional requirements set for in 36 CFR Part 60. In my opinion, the property  meets  does not meet the National Register criteria. I recommend that this property be considered significant  nationally  statewide  locally. (See continuation sheet for additional comments.)

Catherine Mottram  
Signature of certifying official/Title

3/12/07  
Date

Arkansas Historic Preservation Program

State or Federal agency and bureau

In my opinion, the property  meets  does not meet the National Register criteria. ( See Continuation sheet for additional comments.)

Signature of certifying official/Title

Date

State or Federal agency and bureau

4. National Park Service Certification

I hereby certify that the property is:

Signature of the Keeper

Date of Action

entered in the National Register.  
 See continuation sheet

determined eligible for the National Register.

See continuation sheet

determined not eligible for the National Register.

removed from the National Register.

other, (explain:)

Old Gillett Jail  
Name of Property

Arkansas County, Arkansas  
County and State

**5. Classification**

**Ownership of Property**  
(Check as many boxes as apply)

- private
- public-local
- public-State
- public-Federal

**Category of Property**  
(Check only one box)

- building(s)
- district
- site
- structure
- object

**Number of Resources within Property**  
(Do not include previously listed resources in count.)

Contributing	Noncontributing	
1		buildings
		sites
		structures
		objects
1		Total

**Name of related multiple property listing**  
(Enter "N/A" if property is not part of a multiple property listing.)

**Number of Contributing resources previously listed in the National Register**

**6. Function or Use**

**Historic Functions**  
(Enter categories from instructions)

GOVERNMENT/Correctional Facility  
\_\_\_\_\_  
\_\_\_\_\_  
\_\_\_\_\_  
\_\_\_\_\_  
\_\_\_\_\_

**Current Functions**  
(Enter categories from instructions)

VACANT/NOT IN USE  
\_\_\_\_\_  
\_\_\_\_\_  
\_\_\_\_\_  
\_\_\_\_\_  
\_\_\_\_\_

**7. Description**

**Architectural Classification**  
(Enter categories from instructions)

OTHER/Plain Traditional  
\_\_\_\_\_  
\_\_\_\_\_

**Materials**  
(Enter categories from instructions)

foundation CONCRETE  
walls BRICK  
\_\_\_\_\_  
roof METAL  
other \_\_\_\_\_  
\_\_\_\_\_

**Narrative Description**  
(Describe the historic and current condition of the property on one or more continuation sheets.)

Old Gillett Jail

Name of Property

Arkansas County, Arkansas

County and State

8. Statement of Significance

Applicable National Register Criteria

Mark "x" in one or more boxes for the criteria qualifying the property for National Register listing.)

- A Property is associated with events that have made a significant contribution to the broad patterns of our history.
B Property is associated with the lives of persons significant in our past.
C Property embodies the distinctive characteristics of a type, period, or method of construction or represents the work of a master, or possesses high artistic values, or represents a significant and distinguishable entity whose components lack individual distinction.
D Property has yielded, or is likely to yield, information important in prehistory or history.

Criteria Considerations

(Mark "x" in all the boxes that apply.)

Property is:

- A owned by a religious institution or used for religious purposes.
B removed from its original location.
C birthplace or grave of a historical figure of outstanding importance.
D a cemetery.
E a reconstructed building, object, or structure.
F a commemorative property
G less than 50 years of age or achieved significance within the past 50 years.

Levels of Significance (local, state, national)

LOCAL

Areas of Significance (Enter categories from instructions)

ARCHITECTURE

LAW

POLITICS/GOVERNMENT

Period of Significance

1922-1957

Significant Dates

1922-1957

Significant Person (Complete if Criterion B is marked)

Cultural Affiliation (Complete if Criterion D is marked)

Architect/Builder

Narrative Statement of Significance

(Explain the significance of the property on one or more continuation sheets.)

9. Major Bibliographical References

Bibliography

(Cite the books, articles, and other sources used in preparing this form on one or more continuation sheets.)

Previous documentation on file (NPS):

- preliminary determination of individual listing (36 CFR 67) has been requested
previously listed in the National Register
Previously determined eligible by the National Register
designated a National Historic Landmark
recorded by Historic American Buildings Survey #
recorded by Historic American Engineering Record #

Primary location of additional data:

- X State Historic Preservation Office
Other State Agency
Federal Agency
Local Government
University
Other

Name of repository:

Old Gillett Jail  
Name of Property

Arkansas County, Arkansas  
County and State

**10. Geographical Data**

Age of Property Less than one.

**UTM References**

(Place additional UTM references on a continuation sheet.)

1	<u>15</u>	<u>649488</u>	<u>3776349</u>	3	<u>          </u>	<u>          </u>	<u>          </u>
	Zone	Easting	Northing		Zone	Easting	Northing
2	<u>          </u>	<u>          </u>	<u>          </u>	4	<u>          </u>	<u>          </u>	<u>          </u>

See continuation sheet

**Verbal Boundary Description**

(Describe the boundaries of the property on a continuation sheet.)

**Boundary Justification**

(Explain why the boundaries were selected on a continuation sheet.)

**11. Form Prepared By**

name/title Ralph S. Wilcox, National Register & Survey Coordinator  
organization Arkansas Historic Preservation Program date January 4, 2007  
street & number 1500 Tower Building, 323 Center Street telephone (501) 324-9787  
city or town Little Rock state AR zip code 72201

**Additional Documentation**

Submit the following items with the completed form:

**Continuation Sheets**

**Maps**

- A **USGS map** (7.5 or 15 minute series) indicating the property's location
- A **Sketch map** for historic districts and properties having large acreage or numerous resources.

**Photographs**

Representative **black and white photographs** of the property.

**Additional items**

(Check with the SHPO or FPO for any additional items.)

**Property Owner**

(Complete this item at the request of SHPO or FPO.)

name City of Gillett  
street & number PO Box 367 telephone             
city or town Gillett state AR zip code 72055

**Paperwork Reduction Act Statement:** This information is being collected for applications to the National Register of Historic Places to nominate properties for listing or determine eligibility for listing, to list properties, and to amend existing listing. Response to this request is required to obtain a benefit in accordance with the National Historic Preservation Act, as amended (16 U.S.C. 470 *et seq.*)

**Estimated Burden Statement:** Public reporting burden for this form is estimated to average 18.1 hours per response including time for reviewing instructions, gathering and maintaining data, and completing and reviewing the form. Direct comments regarding this burden estimate or any aspect of this form to the Chief, Administrative Services Division, National Park Service, P. O. Box 37127, Washington, DC 20013-7127; and the Office of Management and Budget, Paperwork Reductions Projects (1024-0018), Washington, DC 20303.

United States Department of the Interior  
National Park Service

## National Register of Historic Places Continuation Sheet

Section number 7 Page 1

### SUMMARY

The Old Gillett Jail is located at 207 Main Street adjacent to City Hall in the center of Gillett, Arkansas County, Arkansas. The one-story brick building has a metal gable roof and rests on a continuous concrete foundation. A brick chimney is located in the center of the gable roof. The building's interior contains two cells and a small entryway.

### ELABORATION

The Old Gillett Jail is located at 207 Main Street adjacent to City Hall in the center of Gillett, Arkansas County, Arkansas. The one-story building rests on a continuous concrete foundation. The building's brick walls are laid in a running bond and four-over-four wood-frame windows with vertical bars fenestrate the walls. The bricks surrounding the windows, at the building's corners, and at the base of the walls are slightly darker in color, providing a subtle decorative effect. The jail is topped by a metal gable roof, with a brick chimney in the center. The building's interior contains two cells and a small entryway that are separated by brick walls.

#### Front/North Façade

The jail's front façade is symmetrical and is centered around the building's main entrance, which has a solid metal door. On each side of the door is a single four-over-four wood-frame window with vertical bars. The windows have concrete sills and lintels. A small rectangular vent is located in the gable peak.

#### Side/East Façade

The east façade is fenestrated by a single centered four-over-four wood-frame window with vertical bars and concrete sills and lintels.

#### Rear/South Façade

The south façade is fenestrated by two four-over-four wood-frame windows with concrete sills and lintels although the vertical bars have been removed from the eastern window. As on the front façade, a small rectangular vent is located in the gable peak.

#### Side/West Façade

The west façade is fenestrated by a single centered four-over-four wood-frame window with concrete sills and lintels. To accommodate the installation of a window-unit air-conditioner, the vertical bars have been removed.

#### Interior

The interior of the jail is divided into three rooms. Upon entering the building, the first space encountered is a triangular entryway. Doors lead off the entryway into two identical pentagonal cells. The interior walls are brick covered with plaster. Holes in the chimney in the two cells allow for the installation of stoves to provide heat. The floors and ceilings are concrete.

Old Gillett Jail  
Name of Property

Arkansas County, Arkansas  
County and State

United States Department of the Interior  
National Park Service

## National Register of Historic Places Continuation Sheet

Section number 7 Page 2

---

### Integrity

Overall, the Old Gillett Jail has good integrity. Some of the windows have begun to deteriorate and some of the bars have been removed, but they are small changes. The biggest change to the building was the replacement of the original metal roof with the current metal roof c.2004. However, the current roof uses the same material and approximates the look of the original roof. The setting around the jail still reflects the small-town setting that would have been present when the building was built.

United States Department of the Interior  
National Park Service

## National Register of Historic Places Continuation Sheet

Section number 8 Page 1

### SUMMARY

The Old Gillett Jail, which is located at 207 Main Street, is being nominated to the National Register of Historic Places with **local significance** under **Criterion C** as an excellent intact example of an early twentieth-century jail. Built in 1922, the Old Gillett Jail is a good example of an early twentieth-century small-town jail. The jail served the Gillett community from 1922 until c.1972, and is also being nominated to the National Register with **local significance** under **Criterion A** for its associations with governmental activities and law enforcement in Gillett.

### ELABORATION

The first European settlers in Arkansas County were the French, who established a post at Arkansas Post in 1686. Another colony, consisting of Germans and founded by John Law, was also established in the Arkansas Post vicinity in the 1720s. Other early settlers came into the area from Kentucky and Tennessee, settling in the eastern part of the county and eventually moving further west.<sup>1</sup>

The development of Gillett appears to have centered around the arrival of the railroad. The community was founded in 1888 and incorporated in 1906 and named after visiting New York railroad underwriter Francis Gillett.<sup>2</sup> A post office was established at Stanley, a community that existed east of Gillett, in 1884, but the Stanley mail was sent to Gillett in 1892. Gillett's original name was Champion, and a post office was established in the community in 1890. The name was changed to Gillett in 1892.<sup>3</sup>

By 1895, the line of the Stuttgart & Arkansas River Railroad went southeast from Stuttgart before turning south to the Arkansas River, where it intersected with the Mississippi River & Northwestern Railroad, although neither Gillett or Champion appear on the map.<sup>4</sup> However, by 1898, Gillett appeared on the map, and the railroad line ended at Gillett.<sup>5</sup>

Although Gillett remained a small town, it became necessary by the early 1920s to build a jail for the community. In 1922, a small two-cell brick jail was built for the town. Although a utilitarian building, different colored brick was used around the windows, at the building's corners, and at the base of the walls to provide subtle decoration. Each cell had two opening windows that provided cross ventilation during hot

<sup>1</sup> *Biographical and Historical Memoirs of Eastern Arkansas*. Chicago: The Goodspeed Publishing Co., 1890, p. 634, and James E. Scott and Dwight Pitcaithley. "Arkansas Post, Arkansas County, Arkansas." National Register of Historic Places Registration Form. From the files of the Arkansas Historic Preservation Program, 1979.

Information on Gillett found at: <http://local.arkansas.gov/local.php?agency=Gillett>.

<sup>2</sup> Baker, Russell Pierce. *From Memdag to Norsk: A Historical Directory of Arkansas Post Offices, 1832-1971*. Hot Springs, AR: Arkansas Genealogical Society, 1988, pp. 42, 90, and 209.

<sup>4</sup> *Cram's Township and Rail Road Map of Arkansas*. Map. Chicago: George Franklin Cram, 1895.

<sup>5</sup> *Rand McNally indexed county and township pocket map and shippers guide of Arkansas showing all railroad, cities, towns, villages, post offices, lakes, rivers, etc.* Map. Chicago: Rand McNally and Company, 1898.

United States Department of the Interior  
National Park Service

## National Register of Historic Places Continuation Sheet

Section number 8 Page 2

weather and the ability to feed stove pipes into the central chimney for heat in the winter. The two cells, which are pentagonal in plan, open off of a triangular entryway.

The Old Gillett Jail continued to be used by the community until c.1972.<sup>6</sup> Today, the building is vacant, although the community would like to restore the building for storage. However, the Old Gillett Jail remains as a good example of an early twentieth-century jail building, and a reminder of the early days of law enforcement in the Gillett area.

### STATEMENT OF SIGNIFICANCE

The Old Gillett Jail, which is located at 207 Main Street, is being nominated to the National Register of Historic Places with **local significance** under **Criterion C** as an excellent intact example of an early twentieth-century jail. Built in 1922, the Old Gillett Jail is a good example of an early twentieth-century small-town jail. The jail served the Gillett community from 1922 until c.1972, and is also being nominated to the National Register with **local significance** under **Criterion A** for its associations with governmental activities and law enforcement in Gillett.

<sup>6</sup> Mattmiller, Layton, Mayor of Gillett. Telephone conversation with the author. 4 January 2007.



United States Department of the Interior  
National Park Service

## National Register of Historic Places Continuation Sheet

Section number 9 Page 1

---

### BIBLIOGRAPHY

Baker, Russell Pierce. *From Memdag to Norsk: A Historical Directory of Arkansas Post Offices, 1832-1971*. Hot Springs, AR: Arkansas Genealogical Society, 1988.

*Biographical and Historical Memoirs of Eastern Arkansas*. Chicago: The Goodspeed Publishing Co., 1890.

*Cram's Township and Rail Road Map of Arkansas*. Map. Chicago: George Franklin Cram, 1895.

Information on Gillett found at: <http://local.arkansas.gov/local.php?agency=Gillett>.

Mattmiller, Layton, Mayor of Gillett. Telephone conversation with the author. 4 January 2007.

*Rand McNally indexed county and township pocket map and shippers guide of Arkansas showing all railroad, cities, towns, villages, post offices, lakes, rivers, etc.* Map. Chicago: Rand McNally and Company, 1898.

Scott, James E. and Dwight Pitcaithley. "Arkansas Post, Arkansas County, Arkansas." National Register of Historic Places Registration Form. From the files of the Arkansas Historic Preservation Program, 1979.

Old Gillett Jail  
Name of Property

Arkansas County, Arkansas  
County and State

United States Department of the Interior  
National Park Service

## National Register of Historic Places Continuation Sheet

Section number 10 Page 1

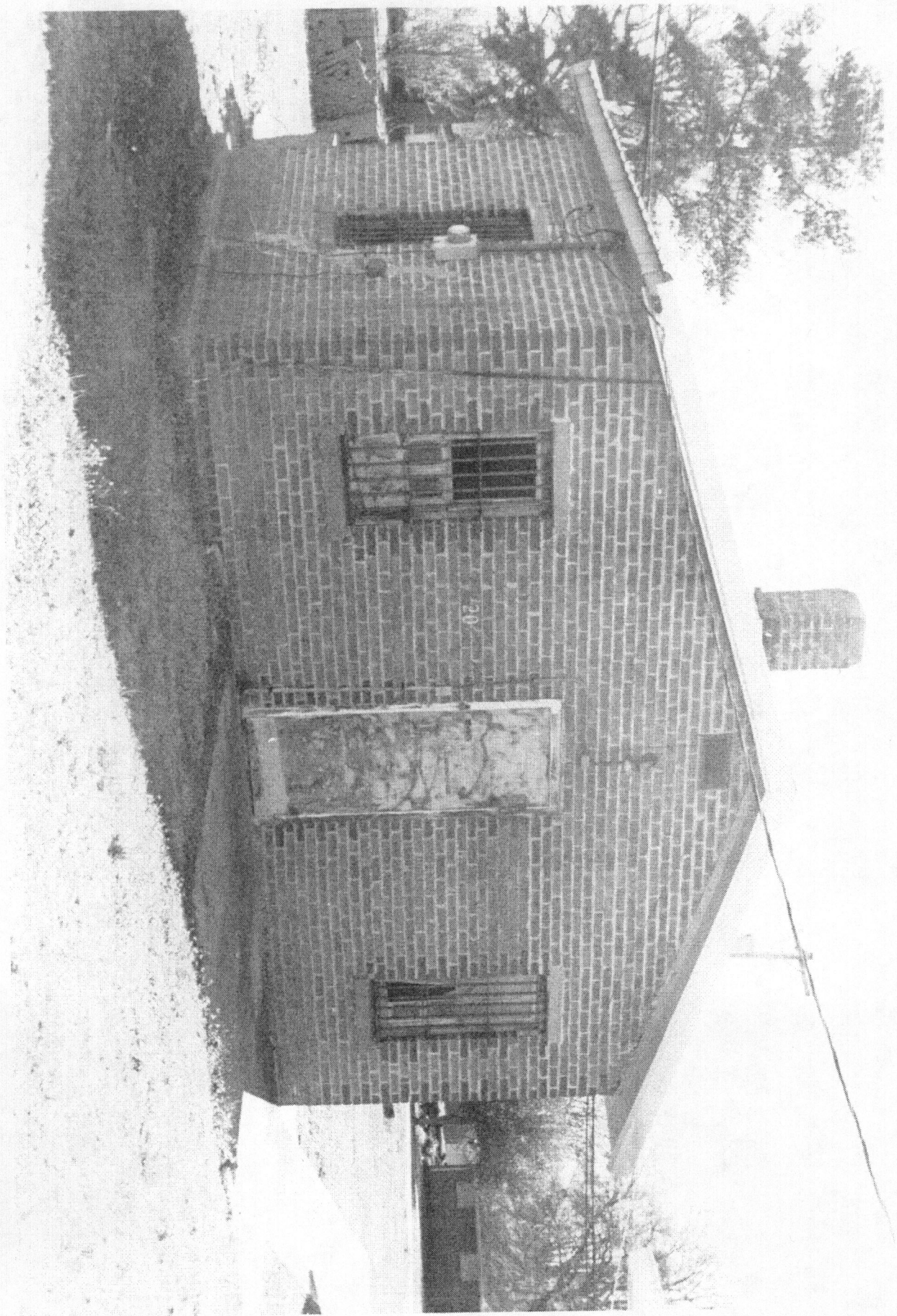
---

### VERBAL BOUNDARY DESCRIPTION

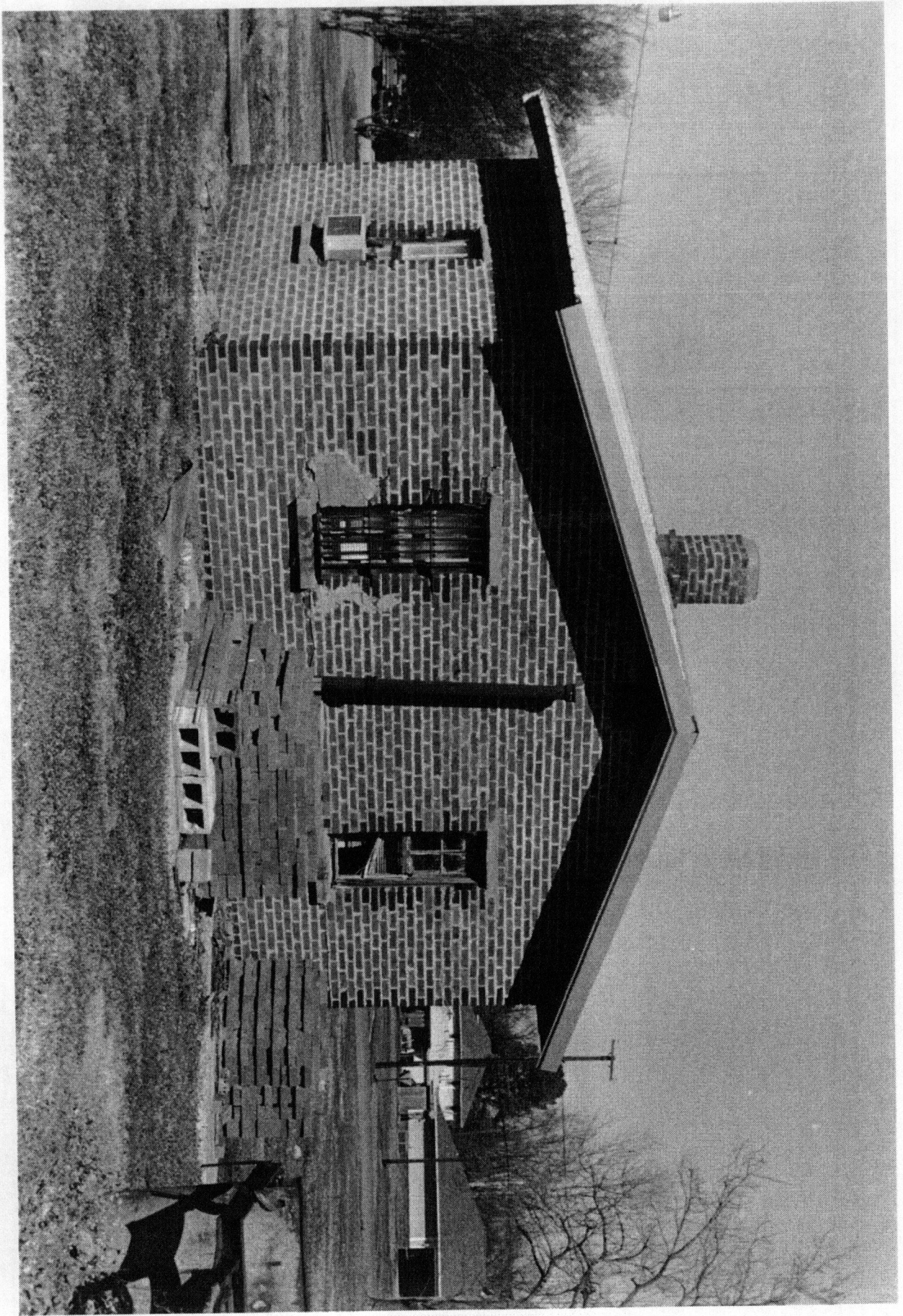
From the southeast corner of the Main Street and 3<sup>rd</sup> Street intersection, proceed easterly along the south side of Main Street for 165 feet to the point of beginning. From the point of beginning, proceed southerly for 145 feet perpendicular to Main Street, thence proceed easterly for 60 feet parallel to Main Street, thence proceed northerly for 145 feet perpendicular to Main Street, thence proceed westerly for 60 feet along the south side of Main Street to the point of beginning.

### BOUNDARY JUSTIFICATION

The boundary contains the land that is historically associated with the Old Gillett Jail.







GILLETT QUADRANGLE  
ARKANSAS  
7.5 MINUTE SERIES (TOPOGRAPHIC)

SW 1/4 GILLETT 15' QUADRANGLE

722 1/2 IN NE  
(FITCHNER)

91° 22' 30"

34° 07' 30"

530 000  
FEET

1:63

1:75

OLD GILLETT JAIL  
GILLETT,  
ARKANSAS

CLARK COUNTY, ARK.

QUAD #:

W 19° 59' 43" / 31° 28' 47"

