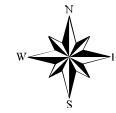
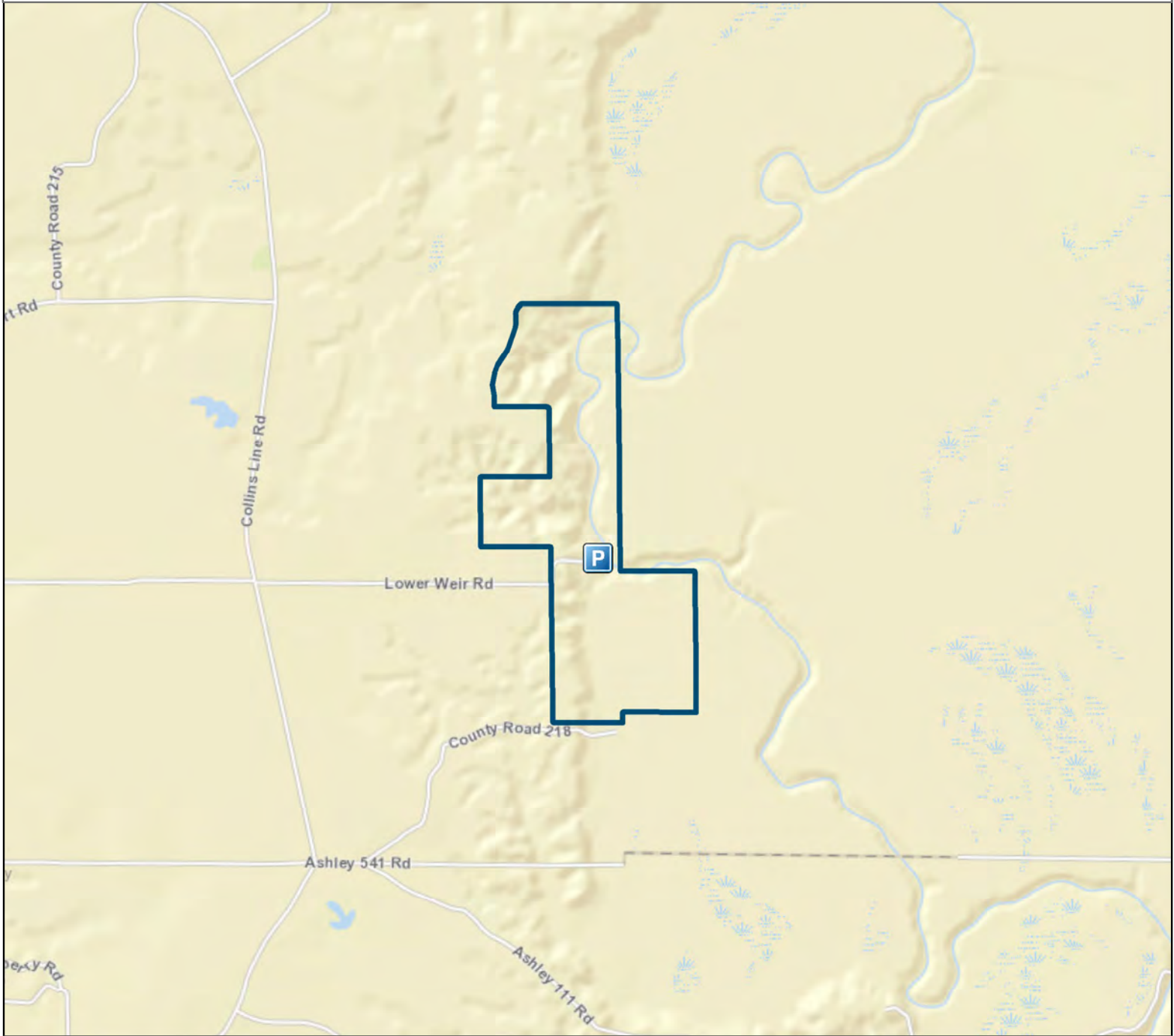




Arkansas Natural Heritage Commission
 System of Natural Areas
 Natural Area Boundaries
Cut-off Creek Ravines Natural Area



Date: 2/18/2022



County: Drew

Date Added: 1990

Acres: 377

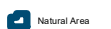
USGS Quadrangle: Line 7.5'

Directions: From Monticello, travel east 14 miles on State Highway 35 to Collins. From Collins travel south on County Road 51 (Collins-Line Road) for 9.3 miles. Turn left onto a gravel road marked by an Arkansas Game and Fish Commission sign for "Campsite 2." Travel east 1.2 miles to the boat launch ramp.

Legend



Parking



Natural Area



Disclaimer: This map is for general reference purposes only and is not a legal document. User assumes all risks.

